

CHRNA1 Rabbit pAb

货号: **AYP13566**

产品信息

反应	Human,Mouse
宿主	Rabbit
克隆性	Polyclonal
预测反应	WB: Mus musculus,Homo sapiens
应用	WB
推荐浓度	WB: 1:500 - 1:2000
理论分子量	51kDa/54kDa
实测分子量	66kDa
形式	Liquid
保存条件	Store at -20°C. Avoid freeze / thaw cycles. Buffer: PBS with 0.02% sodium azide,50% glycerol,pH7.3.
偶联物	Unconjugated
阳性对照	SW620,ES-2,SW480,Mouse skeletal muscle,Mouse kidney,Mouse heart,Mouse lung
细胞定位	Cell junction,Cell membrane,Multi-pass membrane protein,postsynaptic cell membrane,synapse
纯化	Affinity purification

抗原信息

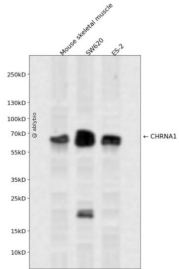
抗原信息	Recombinant fusion protein containing a sequence corresponding to amino acids 105-220 of human CHR NA1 (NP_000070.1).
序列	IWRPDLVLYNNADGDFAIVKFTKVLLQYTGHITWTPPAIFKSYCEIIVTHFPFDEQNCMKLGTWYDGSVVAINPESDQPD LSNFMESGEWVIKESRGWKHSVTYSCCPDTPYLD

靶点信息

研究背景	The muscle acetylcholine receptor consists of 5 subunits of 4 different types: 2 alpha subunits and 1 each of the beta, gamma, and delta subunits. This gene encodes an alpha subunit that plays a role in acetylcholine binding/channel gating. Alternatively spliced transcript variants encoding different isoforms have been identified.
基因ID	1134

基因名	CHRNA1
Swiss	P02708
别名	CHRNA1;ACHRA;ACHRD;CHRNA;CMS1A;CMS1B;CMS2A;FCCMS;SCCMS

产品验证



Western blot analysis of CHRNA1 expressed in Mouse skeletal muscle,SW620,ES-2 using CHRNA1 Rabbit pAb at 1:1000. Secondary antibody: HRP Goat Anti-Rabbit IgG (H+L) at 1:5000. Lysates/proteins: 30ug per lane. Blocking buffer: 5% non-fat dry milk in TBST. Detection: ECL Enhanced Kit. Exposure time: 120s.

实验步骤

访问官网浏览详情: www.ablybio.cn