

SERPINE2 Rabbit pAb

货号: **AYP13562**

产品信息

反应	Mouse
宿主	Rabbit
克隆性	Polyclonal
预测反应	WB: Homo sapiens
应用	WB
推荐浓度	WB: 1:500 - 1:2000
理论分子量	44kDa/45kDa
实测分子量	44kDa
形式	Liquid
保存条件	Store at -20°C. Avoid freeze / thaw cycles. Buffer: PBS with 0.02% sodium azide, 50% glycerol, pH7.3.
偶联物	Unconjugated
阳性对照	Mouse brain, Mouse kidney
细胞定位	Secreted, extracellular space
纯化	Affinity purification

抗原信息

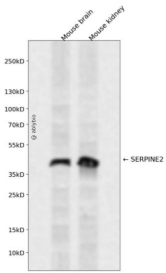
抗原信息	Recombinant fusion protein containing a sequence corresponding to amino acids 20-398 of human SERPINE2 (NP_006207.1).
序列	SHFNPLSLEELGSNTGIQVFNQIVKSRPHDNIVISPHGIASVLGMLQLGADGRKKQLAMVMRYGVNMGVKGILKKINKAIVS KKNKDIVTVANAVFVKNASEIEVPFVTRNKDVFQCEVRNVNFEDPASACDSINAWVKNETRDMIDNLLSPDLIDGVLTRLV LVNAVYFKGLWKSFRQPENTKKRTFVAADGKSYQVPMLAQLSVFRCGSTSAPNDLWYNFIELPYHGESISMLIALPTESST PLSAIIPHISTKTIDSWMSIMVPKRVQVILPKFTAQAQTLKEPLKVLGITDMFDSKANFAKITTGSENLVSHILQKAKIEVS EDGTKASAATTAILIARSSPPWFIVDRPFLFFIRHNPTGAVLFMGQINKP

靶点信息

研究背景	This gene encodes a member of the serpin family of proteins, a group of proteins that inhibit serine proteases. Thrombin, urokinase, plasmin and trypsin are among the proteases that this family member can inhibit. This gene is a susceptibility gene for chronic obstructive pulmonary disease and for emphysema. Alternative splicing results in multiple transcript variants.
------	---

基因ID	5270
基因名	SERPINE2
Swiss	P07093
别名	SERPINE2;GDN;GDNPF;PI-7;PI7;PN-1;PN1;PNI

产品验证



Western blot analysis of SERPINE2 expressed in Mouse brain, Mouse kidney using SERPINE2 Rabbit pAb at 1:1000. Secondary antibody: HRP Goat Anti-Rabbit IgG (H+L) at 1:5000. Lysates/proteins: 30ug per lane. Blocking buffer: 5% non-fat dry milk in TBST. Detection: ECL Enhanced Kit. Exposure time: 120s.

实验步骤

访问官网浏览详情: www.ablybio.cn