

S100A12 Rabbit pAb

货号: **AYP13561**

产品信息

| | |
|-------|--------------------------------------------------------------------------------------------------------|
| 反应 | Human,Mouse,Rat |
| 宿主 | Rabbit |
| 克隆性 | Polyclonal |
| 预测反应 | WB: Homo sapiens |
| 应用 | WB IHC IF/ICC |
| 推荐浓度 | WB: 1:500 - 1:1000 IHC: 1:100 - 1:500 IF/ICC: 1:50 - 1:200 |
| 理论分子量 | 10kDa |
| 实测分子量 | 11KDa |
| 形式 | Liquid |
| 保存条件 | Store at -20°C. Avoid freeze / thaw cycles. Buffer: PBS with 0.02% sodium azide,50% glycerol,pH7.3. |
| 偶联物 | Unconjugated |
| 阳性对照 | 293F |
| 细胞定位 | Cell membrane,Cytoplasm,Peripheral membrane protein,Secreted,cytoskeleton |
| 纯化 | Affinity purification |

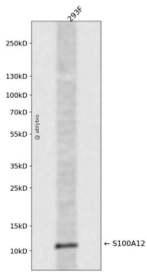
抗原信息

| | |
|------|--------------------------------------------------------------------------------------------------------------------|
| 抗原信息 | Recombinant fusion protein containing a sequence corresponding to amino acids 1-92 of human S100A12 (NP_005612.1). |
| 序列 | MTKLEEHLEGIVNIFHQYSVRKGFHDTLSKGLKQLLTKELANTIKNIKDKAVIDEIFQGLDANQDEQVDFQEFISLVAIALKA AHYHTHKE |

靶点信息

| | |
|-------|-------------------------------------------------------------------------------------------------------------------------------------------------------------------------------------------------------------------------------------------------------------------------------------------------------------------------------------------------------------------------------------------------------------------------------------------------------------------------------------------------------------------------------------------------------------------------------------------------------------------------------------------------------------------------------------------------------------------|
| 研究背景 | The protein encoded by this gene is a member of the S100 family of proteins containing 2 EF-hand calcium-binding motifs. S100 proteins are localized in the cytoplasm and/or nucleus of a wide range of cells, and involved in the regulation of a number of cellular processes such as cell cycle progression and differentiation. S100 genes include at least 13 members which are located as a cluster on chromosome 1q21. This protein is proposed to be involved in specific calcium-dependent signal transduction pathways and its regulatory effect on cytoskeletal components may modulate various neutrophil activities. The protein includes an antimicrobial peptide which has antibacterial activity. |
| 基因ID | 6283 |
| 基因名 | S100A12 |
| Swiss | P80511 |
| 别名 | S100A12;CAAF1;CAGC;CGRP;ENRAGE;MRP-6;MRP6;p6 |

产品验证



Western blot analysis of S100A12 expressed in 293F using S100A12 Rabbit pAb at 1:1000. Secondary antibody: HRP Goat Anti-Rabbit IgG (H+L) at 1:5000. Lysates/proteins: 30ug per lane. Blocking buffer: 5% non-fat dry milk in TBST. Detection: ECL Enhanced Kit. Exposure time: 120s.

实验步骤

访问官网浏览详情: www.ablybio.cn