

# GHRH Rabbit pAb

货号: **AYP13557**

## 产品信息

反应	Human,Mouse,Rat
宿主	Rabbit
克隆性	Polyclonal
预测反应	<b>IHC:</b> Mus musculus
应用	<a href="#">WB</a> <a href="#">IF/ICC</a>
推荐浓度	<b>WB:</b> 1:500 - 1:1000 <b>IF/ICC:</b> 1:50 - 1:200
理论分子量	12kDa
实测分子量	12KDa
形式	Liquid
保存条件	Store at -20°C. Avoid freeze / thaw cycles. Buffer: PBS with 0.05% proclin300,50% glycerol,pH7.3.
偶联物	Unconjugated
阳性对照	Mouse brain,Rat brain
细胞定位	Secreted
纯化	Affinity purification

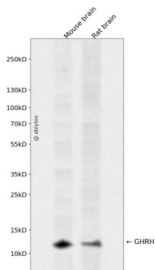
## 抗原信息

抗原信息	A synthetic peptide corresponding to a sequence within amino acids 1-108 of human GHRH (NP_066567.1).
序列	MPLWVFFFVILTLSNSSHCSPPPPLTLRMRRYADAIFTNSYRKVLGQLSARKLLQDIMSRQQGESNQERGARARLGRQVD SMWAEQKQMELESILVALLQKHSRNSQG

## 靶点信息

研究背景	This gene encodes a member of the glucagon family of proteins. The encoded preproprotein is produced in the hypothalamus and cleaved to generate the mature factor, known as somatoliberin, which acts to stimulate growth hormone release from the pituitary gland. Variant receptors for somatoliberin have been found in several types of tumors, and antagonists of these receptors can inhibit the growth of the tumors. Defects in this gene are a cause of dwarfism, while hypersecretion of the encoded protein is a cause of gigantism. Alternative splicing results in multiple transcript variants, at least one of which encodes a preproprotein that is proteolytically processed.
基因ID	2691
基因名	GHRH
Swiss	P01286
别名	GHRH;GHRF;GRF;INN

## 产品验证



Western blot analysis of GHRH expressed in Mouse brain,Rat brain using GHRH Rabbit pAb at 1:1000. Secondary antibody: HRP Goat Anti-Rabbit IgG (H+L) at 1:5000. Lysates/proteins: 30ug per lane. Blocking buffer: 5% non-fat dry milk in TBST. Detection: ECL Enhanced Kit. Exposure time: 120s.

## 实验步骤

访问官网浏览详情: [www.ablybio.cn](http://www.ablybio.cn)