

LBR Rabbit pAb

货号: **AYP13540**

产品信息

反应	Human,Mouse,Rat
宿主	Rabbit
克隆性	Polyclonal
预测反应	WB: Homo sapiens
应用	WB IF/ICC
推荐浓度	WB: 1:500 - 1:2000 IF/ICC: 1:50 - 1:100
理论分子量	70kDa
实测分子量	68kDa
形式	Liquid
保存条件	Store at -20°C. Avoid freeze / thaw cycles. Buffer: PBS with 0.02% sodium azide,50% glycerol,pH7.3.
偶联物	Unconjugated
阳性对照	22Rv1,Mouse eye,Mouse spleen,Mouse lung
细胞定位	Multi-pass membrane protein,Nucleus inner membrane
纯化	Affinity purification

抗原信息

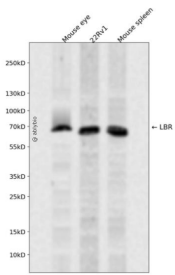
抗原信息	Recombinant fusion protein containing a sequence corresponding to amino acids 1-211 of human LBR (NP_002287.2).
序列	MPSRKFADGEVVRGRWPGSSLYEVEILSHDSTSQLYTVKYKDGTELELKENDIKPLTSFRQRKGGSTSSPSRRRGSR RSRSRSPGRPPKSARRSASASHQADIKEARREVEVKLTPLILKPFGNISRYNGEPEHIERNDAPHKNTQEKFSLSQESSYIA TQYSLRPRREEVKLKEIDSKEEKYVAKELAVRTFEVTPIRAKDLEFGG

靶点信息

研究背景	The protein encoded by this gene belongs to the ERG4/ERG24 family. It localized in the nuclear envelope inner membrane and anchors the lamina and the heterochromatin to the membrane. It may mediate interaction between chromatin and lamin B. Mutations of this gene has been associated with autosomal recessive HEM/Greenberg skeletal dysplasia. Alternative splicing occurs at this locus and two transcript variants encoding the same protein have been identified.
------	--

基因ID	3930
基因名	LBR
Swiss	Q14739
别名	LBR;DHCR14B;LMN2R;PHA;TDRD18

产品验证



Western blot analysis of LBR expressed in Mouse eye,22Rv1,Mouse spleen using LBR Rabbit pAb at 1:10 00. Secondary antibody: HRP Goat Anti-Rabbit IgG (H+L) at 1:5000. Lysates/proteins: 30ug per lane. Blo cking buffer: 5% non-fat dry milk in TBST. Detection: ECL Enhanced Kit. Exposure time: 120s.

实验步骤

访问官网浏览详情: www.ablybio.cn