

SEMG1 Rabbit pAb

货号: AYP13536

产品信息

反应	Human,Mouse,Rat
宿主	Rabbit
克隆性	Polyclonal
预测反应	WB: Homo sapiens
应用	WB IHC
推荐浓度	WB: 1:500 - 1:2000 IHC: 1:50 - 1:200
理论分子量	45kDa/52kDa
实测分子量	60kDa
形式	Liquid
保存条件	Store at -20°C. Avoid freeze / thaw cycles. Buffer: PBS with 0.02% sodium azide,50% glycerol,pH7.3.
偶联物	Unconjugated
阳性对照	THP-1,HT-1080
细胞定位	Secreted
纯化	Affinity purification

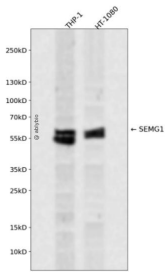
抗原信息

抗原信息	Recombinant fusion protein containing a sequence corresponding to amino acids 24-310 of human SEMG 1 (NP_002998.1).
序列	QKGGSKGRLPSEFSQFPHGQKQGHYSGQKQKQQTESKGSFSIQYTYHVDANDHDQSRKSQQYDLNALHKTTKSQRHL GGSQQLLHNKQEGRDHDKSKGHFHRVVIHHKGGKAHRGTQNPSPGKGISSQYSNTEERLWVHGLSKEQTS VSGAQKGRKQGGSSSYVLQTEELVANKQQRETKNSHQNKGHYQNVVEVREEHSSKVQTSLCPAHQDKLQHGSKDIF STQDELLVYNKNQHQTKNLNQDQQHGRKANKISYQSSSTEERRLHYGENGVQKDVS

靶点信息

研究背景	The protein encoded by this gene is the predominant protein in semen. The encoded secreted protein is involved in the formation of a gel matrix that encases ejaculated spermatozoa. This preproprotein is proteolytically processed by the prostate-specific antigen (PSA) protease to generate multiple peptide products that exhibit distinct functions. One of these peptides, Sgl-29, is an antimicrobial peptide with antibacterial activity. This proteolysis process also breaks down the gel matrix and allows the spermatozoa to move more freely. This gene and another similar semenogelin gene are present in a gene cluster on chromosome 20.
基因ID	6406
基因名	SEMG1
Swiss	P04279
别名	SEMG1;CT103;SEMG;SGL;dj172H20.2

产品验证



Western blot analysis of SEMG1 expressed in THP-1, HT-1080 using SEMG1 Rabbit pAb at 1:1000. Secondary antibody: HRP Goat Anti-Rabbit IgG (H+L) at 1:5000. Lysates/proteins: 30ug per lane. Blocking buffer: 5% non-fat dry milk in TBST. Detection: ECL Enhanced Kit. Exposure time: 120s.

实验步骤

访问官网浏览详情: www.ablybio.cn