

RPLP0 Rabbit pAb

货号: **AYP13528**

产品信息

反应	Human,Mouse
宿主	Rabbit
克隆性	Polyclonal
预测反应	WB: Homo sapiens IHC: Homo sapiens IF: Homo sapiens
应用	WB IF/ICC
推荐浓度	WB: 1:500 - 1:2000 IF/ICC: 1:50 - 1:200
理论分子量	27kDa/34kDa
实测分子量	37kDa
形式	Liquid
保存条件	Store at -20°C. Avoid freeze / thaw cycles. Buffer: PBS with 0.02% sodium azide,50% glycerol,pH7.3.
偶联物	Unconjugated
阳性对照	SW620,A-549,K-562,OVCAR3,Jurkat,Mouse liver,Mouse testis,Mouse thymus
细胞定位	Cytoplasm,Nucleus
纯化	Affinity purification

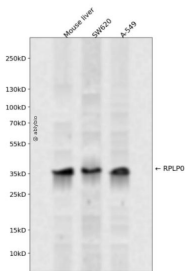
抗原信息

抗原信息	Recombinant fusion protein containing a sequence corresponding to amino acids 1-317 of human RPLP0 (NP_000993.1).
序列	MPREDRATWKSNYFLKIIQLDDYPKCFIVGADNVGSKQMQQIRMSLRGKAVVLMGKNTMMRKAIRGHLENNPALEKLLP HIRGNVGFVFTKEDLTEIRDMLANKVPAARAGAIAPCEVTVPAQNTGLGPEKTSFFQALGITTKISRGITIEILSDVQLIKTG DKVGASEATLLNMLNISPFSGLVIQQVFDNGSIYNPEVLDITEETLHSRFLGVRNVASVCLQIGYPTVASVPHSIINGYKRV LALSVDYTYFPLAEKVKAFLADPSAFVAAAPVAAATTAAPAAAAAPAKVEAKEESESEDEDMGFGLFD

靶点信息

研究背景	Ribosomes, the organelles that catalyze protein synthesis, consist of a small 40S subunit and a large 60S subunit. Together these subunits are composed of 4 RNA species and approximately 80 structurally distinct proteins. This gene encodes a ribosomal protein that is a component of the 60S subunit. The protein, which is the functional equivalent of the E. coli L10 ribosomal protein, belongs to the L10P family of ribosomal proteins. It is a neutral phosphoprotein with a C-terminal end that is nearly identical to the C-terminal ends of the acidic ribosomal phosphoproteins P1 and P2. The P0 protein can interact with P1 and P2 to form a pentameric complex consisting of P1 and P2 dimers, and a P0 monomer. The protein is located in the cytoplasm. Transcript variants derived from alternative splicing exist; they encode the same protein. As is typical for genes encoding ribosomal proteins, there are multiple processed pseudogenes of this gene dispersed through the genome.
基因ID	6175
基因名	RPLP0
Swiss	P05388
别名	RPLP0;L10E;LP0;P0;PRLP0;RPP0

产品验证



Western blot analysis of RPLP0 expressed in Mouse liver, SW620, A-549 using RPLP0 Rabbit pAb at 1:1000. Secondary antibody: HRP Goat Anti-Rabbit IgG (H+L) at 1:5000. Lysates/proteins: 30ug per lane. Blocking buffer: 5% non-fat dry milk in TBST. Detection: ECL Enhanced Kit. Exposure time: 120s.

实验步骤

访问官网浏览详情: www.ablybio.cn