

# MCM5 Rabbit pAb

货号: **AYP13527**

## 产品信息

反应	Human,Mouse,Rat
宿主	Rabbit
克隆性	Polyclonal
预测反应	<b>WB:</b> Homo sapiens
应用	<a href="#">WB</a> <a href="#">IF/ICC</a> <a href="#">IP</a>
推荐浓度	<b>WB:</b> 1:1000 - 1:3000 <b>IF/ICC:</b> 1:50 - 1:200 <b>IP:</b> 1:500 - 1:1000
理论分子量	82kDa
实测分子量	100kDa
形式	Liquid
保存条件	Store at -20°C. Avoid freeze / thaw cycles. Buffer: PBS with 0.02% sodium azide,50% glycerol,pH7.3.
偶联物	Unconjugated
阳性对照	HeLa,Jurkat,SW620,Mouse spleen,Rat thymus
细胞定位	Nucleus
纯化	Affinity purification

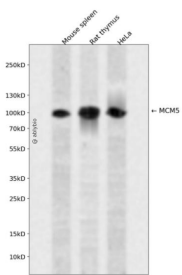
## 抗原信息

抗原信息	Recombinant fusion protein containing a sequence corresponding to amino acids 1-230 of human MCM5 (NP_006730.2).
序列	MSGFDDDPGIFYSDSFGGDAQADEGQARKSQLQRRFKEFLRQYRVGTDRTGGFTFKYRDELKRHYNLGEYWIEVEMEDLASFDEDLADYLYKQPAEHLQLLEEAKEVADEVTRPRPSGEEVLQDIQVMLKSDASPSSIRSLKSDMMSHLVKIPGIIIAASAVRAKATRISIQCRSCRNTLTNIAMRPGLEGYALPRKCNTDQAGRPKCPLDPYFIMPDKCKCVDFQTLKLQ

## 靶点信息

研究背景	The protein encoded by this gene is structurally very similar to the CDC46 protein from <i>S. cerevisiae</i> , a protein involved in the initiation of DNA replication. The encoded protein is a member of the MCM family of chromatin-binding proteins and can interact with at least two other members of this family. The encoded protein is upregulated in the transition from the G0 to G1/S phase of the cell cycle and may actively participate in cell cycle regulation.
基因ID	4174
基因名	MCM5
Swiss	P33992
别名	MCM5;CDC46;P1-CDC46

## 产品验证



Western blot analysis of MCM5 expressed in Mouse spleen, Rat thymus, HeLa using MCM5 Rabbit pAb at 1:1000. Secondary antibody: HRP Goat Anti-Rabbit IgG (H+L) at 1:5000. Lysates/proteins: 30ug per lane. Blocking buffer: 5% non-fat dry milk in TBST. Detection: ECL Enhanced Kit. Exposure time: 120s.

## 实验步骤

访问官网浏览详情: [www.ablybio.cn](http://www.ablybio.cn)