

NAPSA Rabbit pAb

货号: **AYP13521**

产品信息

反应	Human,Mouse,Rat
宿主	Rabbit
克隆性	Polyclonal
预测反应	IF: Homo sapiens
应用	WB IF/ICC
推荐浓度	WB: 1:100 - 1:500 IF/ICC: 1:50 - 1:200
理论分子量	45kDa
实测分子量	38KDa
形式	Liquid
保存条件	Store at -20°C. Avoid freeze / thaw cycles. Buffer: PBS with 0.02% sodium azide,50% glycerol,pH7.3.
偶联物	Unconjugated
阳性对照	A-549
细胞定位	Secreted
纯化	Affinity purification

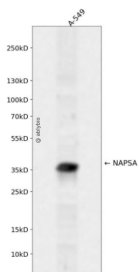
抗原信息

抗原信息	A synthetic peptide corresponding to a sequence within amino acids 321-420 of human NAPSA (NP_004842.1).
序列	PKLPAVSFLLGGVWFNLTAHDYVIQTRNGVRLCLSGFQALDVPPPAGPFWILGDVFLGTYVAVFDRGDMKSSARVGLARARTRGADLGWGETAQAQFPG

靶点信息

研究背景	This gene encodes a member of the peptidase A1 family of aspartic proteases. The encoded preproprotein is proteolytically processed to generate an activation peptide and the mature protease. The activation peptides of aspartic proteinases function as inhibitors of the protease active site. These peptide segments, or pro-parts, are deemed important for correct folding, targeting, and control of the activation of aspartic proteinase zymogens. The encoded protease may play a role in the proteolytic processing of pulmonary surfactant protein B in the lung and may function in protein catabolism in the renal proximal tubules. This gene has been described as a marker for lung adenocarcinoma and renal cell carcinoma.
基因ID	9476
基因名	NAPSA
Swiss	O96009
别名	NAPSA;KAP;Kdap;NAP1;NAPA;SNAPA;napsin-A;Napsin A

产品验证



Western blot analysis of NAPSA expressed in A-549 using NAPSA Rabbit pAb at 1:1000. Secondary antibody: HRP Goat Anti-Rabbit IgG (H+L) at 1:5000. Lysates/proteins: 30ug per lane. Blocking buffer: 5% non-fat dry milk in TBST. Detection: ECL Enhanced Kit. Exposure time: 120s.

实验步骤

访问官网浏览详情: www.ablybio.cn