

— ABLYBIO, Help Your Research



# Hemopexin (HPX) Rabbit pAb

货号: **AYP13520**

## 产品信息

反应	Human,Mouse,Rat
宿主	Rabbit
克隆性	Polyclonal
预测反应	<b>WB:</b> Mus musculus
应用	WB
推荐浓度	<b>WB:</b> 1:500 - 1:2000
理论分子量	51kDa
实测分子量	68kDa
形式	Liquid
保存条件	Store at -20°C. Avoid freeze / thaw cycles. Buffer: PBS with 0.02% sodium azide,50% glycerol,pH7.3.
偶联物	Unconjugated
阳性对照	HL-60,HepG2,BT-474,Mouse liver,Mouse pancreas
细胞定位	Secreted
纯化	Affinity purification

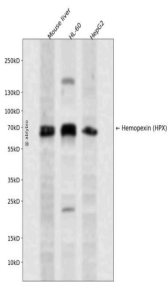
## 抗原信息

抗原信息	Recombinant fusion protein containing a sequence corresponding to amino acids 24-245 of human Hemopexin (Hemopexin (HPX)) (NP_000604.1).
------	--

## 靶点信息

研究背景	This gene encodes a plasma glycoprotein that binds heme with high affinity. The encoded protein is an acute phase protein that transports heme from the plasma to the liver and may be involved in protecting cells from oxidative stress.
基因ID	3263
基因名	HPX
Swiss	P02790 ( <a href="https://www.uniprot.org/uniprotkb/P02790/entry">https://www.uniprot.org/uniprotkb/P02790/entry</a> )
别名	HPX,HX,hemopexin,Hemopexin (HPX) Rabbit pAb,Beta-1B-glycoprotein

## 产品验证



Western blot analysis of Hemopexin (HPX) expressed in Mouse liver, HL-60, HepG2 using Hemopexin (HPX) Rabbit pAb at 1:1000. Secondary antibody: HRP Goat Anti-Rabbit IgG (H+L) at 1:5000. Lysates/proteins: 30ug per lane. Blocking buffer: 5% non-fat dry milk in TBST. Detection: ECL Enhanced Kit. Exposure time: 120s.

## 实验步骤

访问官网浏览详情: [www.ablybio.cn](http://www.ablybio.cn) (<https://www.ablybio.cn/>[www.ablybio.cn](http://www.ablybio.cn))