

— ABLYBIO, Help Your Research



KITLG Rabbit pAb

货号: **AYP13511**

产品信息

反应	Human,Mouse,Rat
宿主	Rabbit
克隆性	Polyclonal
预测反应	IHC: Homo sapiens
应用	WB IF/ICC
推荐浓度	WB: 1:500 - 1:1000 IF/ICC: 1:50 - 1:200
理论分子量	26kDa/27kDa/30kDa
实测分子量	31KDa
形式	Liquid
保存条件	Store at -20°C. Avoid freeze / thaw cycles. Buffer: PBS with 0.01% thiomersal,50% glycerol,pH7.3.
偶联物	Unconjugated
阳性对照	MCF7,Rat lung,Rat liver,Mouse testis,Mouse spleen
细胞定位	Cell membrane,Cytoplasm,Secreted,Single-pass type I membrane protein,cytoskeleton
纯化	Affinity purification

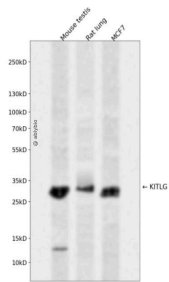
抗原信息

抗原信息	Recombinant fusion protein containing a sequence corresponding to amino acids 120-190 of human KITLG (NP_000890.1).
------	---

靶点信息

研究背景	This gene encodes the ligand of the tyrosine-kinase receptor encoded by the KIT locus. This ligand is a pleiotropic factor that acts in utero in germ cell and neural cell development, and hematopoiesis, all believed to reflect a role in cell migration. In adults, it functions pleiotropically, while mostly noted for its continued requirement in hematopoiesis. Two transcript variants encoding different isoforms have been found for this gene.
基因ID	4254
基因名	KITLG
Swiss	P21583 (https://www.uniprot.org/uniprotkb/P21583/entry)
别名	KITLG,DCUA,DFNA69,FPH2,FPHH,KL-1,Kitl,MGF,SCF,SF,SHEP7,KITLG Rabbit pAb,Mast cell growth factor,Stem cell factor,c-Kit ligand

产品验证



Western blot analysis of KITLG expressed in Mouse testis,Rat lung,MCF7 using KITLG Rabbit pAb at 1:1000. Secondary antibody: HRP Goat Anti-Rabbit IgG (H+L) at 1:5000. Lysates/proteins: 30ug per lane. Blocking buffer: 5% non-fat dry milk in TBST. Detection: ECL Enhanced Kit. Exposure time: 120s.

实验步骤

访问官网浏览详情: www.ablybio.cn (<https://www.ablybio.cn/www.ablybio.cn>)