

— ABLYBIO, Help Your Research



# GCKR Rabbit pAb

货号: **AYP13509**

## 产品信息

反应	Human,Mouse,Rat
宿主	Rabbit
克隆性	Polyclonal
预测反应	<b>WB:</b> Mus musculus
应用	WB
推荐浓度	<b>WB:</b> 1:500 - 1:2000
理论分子量	16kDa/68kDa
实测分子量	60-69kDa
形式	Liquid
保存条件	Store at -20°C. Avoid freeze / thaw cycles. Buffer: PBS with 0.02% sodium azide,50% glycerol,pH7.3.
偶联物	Unconjugated
阳性对照	HL-60,Mouse liver,Rat liver
细胞定位	Cytoplasm,Nucleus
纯化	Affinity purification

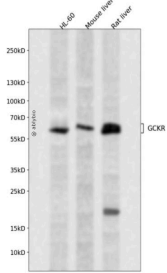
## 抗原信息

抗原信息	Recombinant fusion protein containing a sequence corresponding to amino acids 1-300 of human GCKR (NP_001477.2).
------	--

## 靶点信息

研究背景	This gene encodes a protein belonging to the GCKR subfamily of the SIS (Sugar ISomerase) family of proteins. The gene product is a regulatory protein that inhibits glucokinase in liver and pancreatic islet cells by binding non-covalently to form an inactive complex with the enzyme. This gene is considered a susceptibility gene candidate for a form of maturity-onset diabetes of the young (MODY).
基因ID	2646
基因名	GCKR
Swiss	Q14397 ( <a href="https://www.uniprot.org/uniprotkb/Q14397/entry">https://www.uniprot.org/uniprotkb/Q14397/entry</a> )
别名	GCKR,FGQTL5,GKRP,GCKR Rabbit pAb

## 产品验证



Western blot analysis of GCKR expressed in HL-60, Mouse liver, Rat liver using GCKR Rabbit pAb at 1:1000. Secondary antibody: HRP Goat Anti-Rabbit IgG (H+L) at 1:5000. Lysates/proteins: 30ug per lane. Blocking buffer: 5% non-fat dry milk in TBST. Detection: ECL Enhanced Kit. Exposure time: 120s.

## 实验步骤

访问官网浏览详情: [www.ablybio.cn](http://www.ablybio.cn) (<https://www.ablybio.cn/>[www.ablybio.cn](http://www.ablybio.cn))