

# HNRNPH1 Rabbit pAb

货号: **AYP13476**

## 产品信息

反应	Human,Mouse,Rat
宿主	Rabbit
克隆性	Polyclonal
预测反应	<b>WB:</b> Mus musculus
应用	<a href="#">WB</a> <a href="#">IHC</a> <a href="#">IF/ICC</a>
推荐浓度	<b>WB:</b> 1:1000 - 1:5000 <b>IHC:</b> 1:50 - 1:200 <b>IF/ICC:</b> 1:50 - 1:200
理论分子量	49kDa
实测分子量	55kDa
形式	Liquid
保存条件	Store at -20°C. Avoid freeze / thaw cycles. Buffer: PBS with 0.01% thiomersal,50% glycerol,pH7.3.
偶联物	Unconjugated
阳性对照	Rat testis,Rat brain
细胞定位	Nucleus,nucleoplasm
纯化	Affinity purification

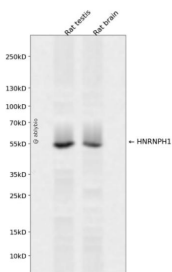
## 抗原信息

抗原信息	Recombinant fusion protein containing a sequence corresponding to amino acids 191-449 of human HNRNPH1 (NP_005511.1).
序列	VRTHYDPPRKLAMQRPQPYDRPGAGRGYNSIGRGAGFERMRRGAYGGYGGYDDYNGYNDGYGFGSDRFRDLNY CFSGMSDHRYGDGGSTFQSTTGHCVHMRGLPYRATENDIYNFFSPLNPVRVHIEIGPDGRVTGEADVEFATHEDAVAAM SKDKANMQHRYVELFLNSTAGASGGAYEHRYVELFLNSTAGASGGAYGSQMMGGMGLSNQSSYGGPASQQLSGGYG GGYGGQSSMSGYDQVLQENSSDFQSNIA

## 靶点信息

研究背景	This gene encodes a member of a subfamily of ubiquitously expressed heterogeneous nuclear ribonucleo proteins (hnRNPs). The hnRNPs are RNA binding proteins that complex with heterogeneous nuclear RNA. These proteins are associated with pre-mRNAs in the nucleus and appear to influence pre-mRNA processing and other aspects of mRNA metabolism and transport. While all of the hnRNPs are present in the nucleus, some may shuttle between the nucleus and the cytoplasm. The hnRNP proteins have distinct nucleic acid binding properties. The protein encoded by this gene has three repeats of quasi-RRM domains that bind to RNA and is very similar to the family member HNRPF. This gene may be associated with hereditary lymphedema type I. Alternatively spliced transcript variants have been described
基因ID	3187
基因名	HNRNPH1
Swiss	P31943
别名	HNRNPH1;HNRPH;HNRPH1;hnRNPH

## 产品验证



Western blot analysis of HNRNPH1 expressed in Rat testis,Rat brain using HNRNPH1 Rabbit pAb at 1:1000. Secondary antibody: HRP Goat Anti-Rabbit IgG (H+L) at 1:5000. Lysates/proteins: 30ug per lane. Blocking buffer: 5% non-fat dry milk in TBST. Detection: ECL Enhanced Kit. Exposure time: 120s.

## 实验步骤

访问官网浏览详情: [www.ablybio.cn](http://www.ablybio.cn)