

CPSF6 Rabbit pAb

货号: **AYP13474**

产品信息

反应	Human,Mouse,Rat
宿主	Rabbit
克隆性	Polyclonal
预测反应	IHC: Homo sapiens
应用	WB IHC IF/ICC IP
推荐浓度	WB: 1:1000 - 1:3000 IHC: 1:50 - 1:200 IF/ICC: 1:50 - 1:200 IP: 1:500 - 1:1000
理论分子量	52kDa/59kDa/63kDa
实测分子量	68kDa
形式	Liquid
保存条件	Store at -20°C. Avoid freeze / thaw cycles. Buffer: PBS with 0.02% sodium azide,50% glycerol,pH7.3.
偶联物	Unconjugated
阳性对照	HeLa,293T,Jurkat,HepG2,HT-1080,Mouse brain,Mouse liver,Rat brain
细胞定位	Nucleus
纯化	Affinity purification

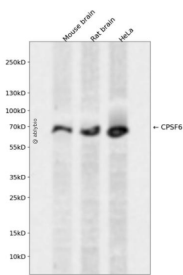
抗原信息

抗原信息	Recombinant fusion protein containing a sequence corresponding to amino acids 1-330 of human CPSF6 (Q16630).
序列	MADGVDHIDIYADVGEFFNQEAAYGGHDQIDLYDDVISPANNGDAPEDRDYMDLPTVGDVVGKGAAPNVVYTYG KRIALYIGNLTWWTTDEDLTEAVHSLGVNDILEIKFFENRANGQSKGFALVGVGSEASSKKLMDLLPKRELHGQNPVWTPC NKQFLSQFEMQSRKTTQSGQMSGEGKAGPPGGSSRAAFPQGGRRGRFPGAVPGGDRFPGPAGPGPPPPFPAGQTP PRPPLGPPGPPGPPPPGQVLPPLAGPPNRGDRPPPPVLFPGQPFQPLGLPPGPPPPVPGYPPPPGPPPPQGGPP PPPGFPFRPPGP

靶点信息

研究背景	The protein encoded by this gene is one subunit of a cleavage factor required for 3' RNA cleavage and polyadenylation processing. The interaction of the protein with the RNA is one of the earliest steps in the assembly of the 3' end processing complex and facilitates the recruitment of other processing factors. The cleavage factor complex is composed of four polypeptides. This gene encodes the 68kD subunit. It has a domain organization reminiscent of spliceosomal proteins.
基因ID	11052
基因名	CPSF6
Swiss	Q16630
别名	CPSF6;CFIM;CFIM68;HPBRII-4;HPBRII-7;CFIM72

产品验证



Western blot analysis of CPSF6 expressed in Mouse brain,Rat brain,HeLa using CPSF6 Rabbit pAb at 1:1000. Secondary antibody: HRP Goat Anti-Rabbit IgG (H+L) at 1:5000. Lysates/proteins: 30ug per lane. Blocking buffer: 5% non-fat dry milk in TBST. Detection: ECL Enhanced Kit. Exposure time: 120s.

实验步骤

访问官网浏览详情: www.ablybio.cn