

PIWIL2 Rabbit pAb

货号: **AYP13470**

产品信息

反应	Mouse,Rat
宿主	Rabbit
克隆性	Polyclonal
预测反应	WB: Rattus norvegicus
应用	WB
推荐浓度	WB: 1:1000 - 1:3000
理论分子量	105kDa/109kDa
实测分子量	110kDa
形式	Liquid
保存条件	Store at -20°C. Avoid freeze / thaw cycles. Buffer: PBS with 0.02% sodium azide,50% glycerol,pH7.3.
偶联物	Unconjugated
阳性对照	Mouse skeletal muscle,Rat skeletal muscle
细胞定位	Cytoplasm
纯化	Affinity purification

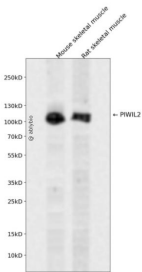
抗原信息

抗原信息	Recombinant fusion protein containing a sequence corresponding to amino acids 398-652 of mouse PIWIL 2 (Q8CDG1).
序列	QNKEHFQDECSKLLVGSIVITRYNNRRTYRIDDDVDWNKTPKDSFVMSDGKEITFLEYYSKNYGITVKEDDQPLLIHRPSEQN NHGMLLKGEILLPELSFMTGIPEKMKKDFRAMKDLTQQINLSPKQHHGALECLLQRISQNETASNELTRWGLSLHKDVHK IEGRLLPMERINLRNTSFVTSEDLNWVKEVTRDASILTIPMHFWALFYPKRAMDQARELVNMLEKIAGPIGMRISPPAWVELK DDRIETYIR

靶点信息

研究背景	Enables RNA binding activity; endoribonuclease activity; and polysome binding activity. Involved in several processes, including germ-line stem cell population maintenance; nucleic acid metabolic process; and positive regulation of cellular protein metabolic process. Acts upstream of or within oogenesis and positive regulation of meiosis I. Located in several cellular components, including cytoplasmic ribonucleoprotein granule; dense body; and perinucleolar chromocenter. Part of PET complex. Is expressed in central nervous system; genitourinary system; and sensory organ. Orthologous to human PIWIL2 (piwi like RNA-mediated gene silencing 2).
基因ID	57746
基因名	
Swiss	
别名	PIWIL2;CT80;HILI;PIWIL1L;mili

产品验证



Western blot analysis of PIWIL2 expressed in Mouse skeletal muscle, Rat skeletal muscle using PIWIL2 Rabbit pAb at 1:1000. Secondary antibody: HRP Goat Anti-Rabbit IgG (H+L) at 1:5000. Lysates/proteins: 30ug per lane. Blocking buffer: 5% non-fat dry milk in TBST. Detection: ECL Enhanced Kit. Exposure time: 120s.

实验步骤

访问官网浏览详情: www.ablybio.cn