

# IFI6 Rabbit pAb

货号: **AYP13463**

## 产品信息

反应	Human
宿主	Rabbit
克隆性	Polyclonal
预测反应	<b>WB:</b> Mus musculus
应用	<a href="#">WB</a>
推荐浓度	<b>WB:</b> 1:500 - 1:2000
理论分子量	12kDa/13kDa
实测分子量	13KDa
形式	Liquid
保存条件	Store at -20°C. Avoid freeze / thaw cycles. Buffer: PBS with 0.05% proclin300,50% glycerol,pH7.3.
偶联物	Unconjugated
阳性对照	K-562
细胞定位	Membrane,Multi-pass membrane protein
纯化	Affinity purification

## 抗原信息

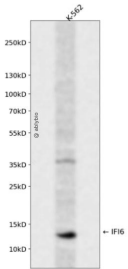
抗原信息	Recombinant fusion protein containing a sequence corresponding to amino acids 1-130 of human IFI6 (NP_002029.3).
序列	MRQKAVSLFLCYLLLFTCSGVEAGKKKCESSDSGSGFWKALTFMAVGGGLAVAGLPALGFTGAGIAANSVAASLMSWSAILNGGGVPAGGLVATLQSLGAGGSSVVIGNIGALMGYATHKYLDSEED

## 靶点信息

研究背景	This gene was first identified as one of the many genes induced by interferon. The encoded protein may play a critical role in the regulation of apoptosis. A minisatellite that consists of 26 repeats of a 12 nucleotide repeating element resembling the mammalian splice donor consensus sequence begins near the end of the second exon. Alternatively spliced transcript variants that encode different isoforms by using the two downstream repeat units as splice donor sites have been described.
基因ID	2537

基因名	IFI6
Swiss	P09912
别名	IFI6;6-16;FAM14C;G1P3;IFI-6-16;IFI616

## 产品验证



Western blot analysis of IFI6 expressed in K-562 using IFI6 Rabbit pAb at 1:1000. Secondary antibody: HR P Goat Anti-Rabbit IgG (H+L) at 1:5000. Lysates/proteins: 30ug per lane. Blocking buffer: 5% non-fat dry milk in TBST. Detection: ECL Enhanced Kit. Exposure time: 120s.

## 实验步骤

访问官网浏览详情: [www.ablybio.cn](http://www.ablybio.cn)