

# p60 CAF1 Rabbit pAb

货号: **AYP13458**

## 产品信息

|       |  |
|-------|--|
| 反应    | Human,Mouse,Rat  |
| 宿主    | Rabbit   |
| 克隆性   | Polyclonal   |
| 预测反应  | <b>WB:</b> Mus musculus  |
| 应用    | <a href="#">WB</a> <a href="#">IHC</a>   |
| 推荐浓度  | <b>WB:</b> 1:500 - 1:2000<br><b>IHC:</b> 1:50 - 1:200  |
| 理论分子量 | 61kDa  |
| 实测分子量 | 70kDa  |
| 形式    | Liquid   |
| 保存条件  | Store at -20°C. Avoid freeze / thaw cycles.<br>Buffer: PBS with 0.02% sodium azide,50% glycerol,pH7.3. |
| 偶联物   | Unconjugated   |
| 阳性对照  | HeLa,293T,MCF7,U-251MG   |
| 细胞定位  | Cytoplasm,Nucleus  |
| 纯化    | Affinity purification  |

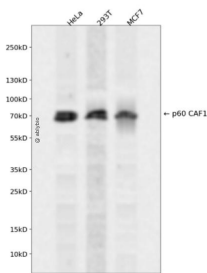
## 抗原信息

|      |   |
|------|---|
| 抗原信息 | Recombinant fusion protein containing a sequence corresponding to amino acids 270-559 of human p60 CAF1 (NP_005432.1).  |
| 序列   | SRKNLKRPIAHLPCPGKATLAVRCCPVYFELRPVVETGVELMSLPYRLVFAVASEDSVLLYDTQQSFPGYVSNIIHYHTLSDI<br>SWSSDGAFLAISSTDGYCSFVTFEKDELGIPLKEKPVLMRTPDTAKKTKSQTHRGSPPGPRPVEGTPASRTQDPSSPGTT<br>PPQARQAPAPTIVRDPPSITPAVKSPPLPGPSEEKTLQPSSQNTKAHPSRRVTLNLTQAWSKTPRRINLTPLKTDTPPSSVPT<br>SVISTPSTEEIQSETPGDAQGSPPELKRPRLDENKGGTESLDP |

## 靶点信息

|       |   |
|-------|---|
| 研究背景  | Chromatin assembly factor I (CAF-I) is required for the assembly of histone octamers onto newly-replicated DNA. CAF-I is composed of three protein subunits, p50, p60, and p150. The protein encoded by this gene corresponds to the p60 subunit and is required for chromatin assembly after replication. The encoded protein is differentially phosphorylated in a cell cycle-dependent manner. In addition, it is normally found in the nucleus except during mitosis, when it is released into the cytoplasm. This protein is a member of the WD-repeat HIR1 family and may also be involved in DNA repair. |
| 基因ID  | 8208  |
| 基因名   | CHAF1B  |
| Swiss | Q13112  |
| 别名    | CHAF1B;CAF-1;CAF-IP60;CAF1;CAF1A;CAF1P60;MPHOSPH7;MPP7  |

## 产品验证



Western blot analysis of p60 CAF1 expressed in HeLa,293T,MCF7 using p60 CAF1 Rabbit pAb at 1:1000. Secondary antibody: HRP Goat Anti-Rabbit IgG (H+L) at 1:5000. Lysates/proteins: 30ug per lane. Blocking buffer: 5% non-fat dry milk in TBST. Detection: ECL Enhanced Kit. Exposure time: 120s.

## 实验步骤

访问官网浏览详情: [www.ablybio.cn](http://www.ablybio.cn)