

DPEP1 Rabbit pAb

货号: **AYP13455**

产品信息

反应	Human,Mouse
宿主	Rabbit
克隆性	Polyclonal
预测反应	WB: Mus musculus
应用	WB
推荐浓度	WB: 1:500 - 1:2000
理论分子量	45kDa
实测分子量	46kDa
形式	Liquid
保存条件	Store at -20°C. Avoid freeze / thaw cycles. Buffer: PBS with 0.02% sodium azide,50% glycerol,pH7.3.
偶联物	Unconjugated
阳性对照	HT-29,HepG2
细胞定位	Apical cell membrane,Cell projection,GPI-anchor,Lipid-anchor,microvillus membrane
纯化	Affinity purification

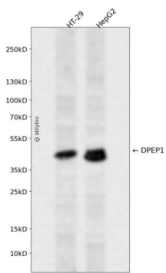
抗原信息

抗原信息	Recombinant fusion protein containing a sequence corresponding to amino acids 17-385 of human DPEP1 (NP_001121613.1).
序列	DFFRDEAERIMRDSVIDGHNDLPWQLLDMFNNRLQDERANLTTLAGHTNIPKLRAGFVGGQFWSVYTPCDTQNKDA VRRTLEQMDVVHRMCRMPETFLYVTSSAGIRQAFREGKVASLIGVEGGHSIDSSLGVLRALYQLGMRYLTLTHSCNTPW ADNWLVDTDGSEPOSQGLSPFGQRVVKELNRLGVLIDLAHVSVATMKATLQLSRAPVIFSHSSAYSVCASRRNVPDDVL RLVKQTDLSLMVNFYNNYISCTNKANLSQVADHLDHIKEVAGARAVGFGGDFDGVPRVPEGLEDVSKYPDLIAELLRRNW TEAEVKGALADNLLRVFEAVEQASNLTAPEEEPIPLDQLGGSCRTHYGYSS

靶点信息

研究背景	The protein encoded by this gene is a kidney membrane enzyme involved in the metabolism of glutathione and other similar proteins by dipeptide hydrolysis. The encoded protein is known to regulate leukotriene activity by catalyzing the conversion of leukotriene D4 to leukotriene E4. This protein uses zinc as a cofactor and acts as a disulfide-linked homodimer. Two transcript variants encoding the same protein have been found for this gene.
基因ID	1800
基因名	DPEP1
Swiss	P16444
别名	DPEP1;MBD1;MDP;RDP

产品验证



Western blot analysis of DPEP1 expressed in HT-29, HepG2 using DPEP1 Rabbit pAb at 1:1000. Secondary antibody: HRP Goat Anti-Rabbit IgG (H+L) at 1:5000. Lysates/proteins: 30ug per lane. Blocking buffer: 5 % non-fat dry milk in TBST. Detection: ECL Enhanced Kit. Exposure time: 120s.

实验步骤

访问官网浏览详情: www.ablybio.cn