

SMYD2 Rabbit pAb

货号: **AYP13431**

产品信息

反应	Human,Mouse
宿主	Rabbit
克隆性	Polyclonal
预测反应	WB: Homo sapiens IF: Homo sapiens
应用	WB IF/ICC
推荐浓度	WB: 1:500 - 1:2000 IF/ICC: 1:10 - 1:100
理论分子量	30kDa/49kDa
实测分子量	50kDa
形式	Liquid
保存条件	Store at -20°C. Avoid freeze / thaw cycles. Buffer: PBS with 0.02% sodium azide,50% glycerol,pH7.3.
偶联物	Unconjugated
阳性对照	HeLa,293T,Mouse heart,Mouse brain
细胞定位	Cytoplasm,Nucleus,cytosol
纯化	Affinity purification

抗原信息

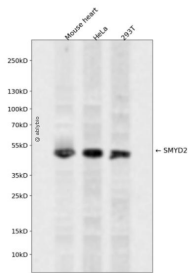
抗原信息	Recombinant fusion protein containing a sequence corresponding to amino acids 1-270 of human SMYD2 (NP_064582.2).
序列	MRAEGLGGLERFCSPGKGRGLRALQPQVGDLLFSCPAYAYVLTVNERGNHCEYCFTRKEGLSKCGRCKQAFYCNVECQ KEDWPMHKLECSMVFVGENWNPSETVRLTARILAKQKIHPERTPSEKLLAVKEFESHLDKLDNEKDLIQSDIAALHHFYS KHLGFDPDNDLVLFAQVNCNGFTIEDEELSHLGSAIFPDVALMNHSCCPNVIVTYKGTAEVRAVQEIKPGEVFTSYIDLL YPTEDRNDRLRDSYFFTCECQECTTK

靶点信息

研究背景	SET domain-containing proteins, such as SMYD2, catalyze lysine methylation (Brown et al., 2006 [PubMed 16805913]).[supplied by OMIM, Nov 2008]
------	--

基因ID	56950
基因名	SMYD2
Swiss	Q9NRG4
别名	SMYD2;HSKM-B;KMT3C;ZMYND14

产品验证



Western blot analysis of SMYD2 expressed in Mouse heart, HeLa, 293T using SMYD2 Rabbit pAb at 1:1000. Secondary antibody: HRP Goat Anti-Rabbit IgG (H+L) at 1:5000. Lysates/proteins: 30ug per lane. Blocking buffer: 5% non-fat dry milk in TBST. Detection: ECL Enhanced Kit. Exposure time: 120s.

实验步骤

访问官网浏览详情: www.ablybio.cn