

KIF2B Rabbit pAb

货号: **AYP13430**

产品信息

反应	Human,Mouse,Rat
宿主	Rabbit
克隆性	Polyclonal
预测反应	IF: Homo sapiens
应用	WB
推荐浓度	WB: 1:500 - 1:2000
理论分子量	76kDa
实测分子量	76kDa
形式	Liquid
保存条件	Store at -20°C. Avoid freeze / thaw cycles. Buffer: PBS with 0.02% sodium azide,50% glycerol,pH7.3.
偶联物	Unconjugated
阳性对照	U-937,Mouse lung,Rat lung
细胞定位	Chromosome,Cytoplasm,centromere,centrosome,cytoskeleton,kinetochore,microtubule organizing center ,spindle
纯化	Affinity purification

抗原信息

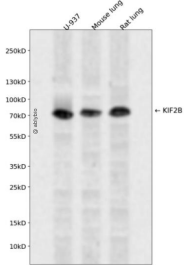
抗原信息	Recombinant fusion protein containing a sequence corresponding to amino acids 544-673 of human KIF2 B (NP_115948.4).
序列	NVDVRPYHRGHYPIGHEAPRMLKSHIGNSEMSLQRDEFIKIPYVQSEEQKEIEEVETLPTLLGKDTTISGKGSSQWLENIQER AGGVHHDIDFCIARSLSILEQKIDALTEIQKLLKLLADLHVKSKVE

靶点信息

研究背景	Plus end-directed microtubule-dependent motor required for spindle assembly and chromosome movement. Has microtubule depolymerization activity. Plays a role in chromosome congression.
基因ID	84643

基因名	KIF2B
Swiss	Q8N4N8
别名	KIF2B

产品验证



Western blot analysis of KIF2B expressed in U-937, Mouse lung, Rat lung using KIF2B Rabbit pAb at 1:1000. Secondary antibody: HRP Goat Anti-Rabbit IgG (H+L) at 1:5000. Lysates/proteins: 30ug per lane. Blocking buffer: 5% non-fat dry milk in TBST. Detection: ECL Enhanced Kit. Exposure time: 120s.

实验步骤

访问官网浏览详情: www.ablybio.cn