

ANTXR1 Rabbit pAb

货号: **AYP13427**

产品信息

反应	Human,Mouse
宿主	Rabbit
克隆性	Polyclonal
预测反应	WB: Homo sapiens
应用	WB
推荐浓度	WB: 1:500 - 1:2000
理论分子量	33kDa/37kDa/39kDa/41kDa/59kDa/62kDa
实测分子量	75kDa
形式	Liquid
保存条件	Store at -20°C. Avoid freeze / thaw cycles. Buffer: PBS with 0.02% sodium azide,50% glycerol,pH7.3.
偶联物	Unconjugated
阳性对照	NCI-H460,HeLa,Mouse ovary,Mouse spleen
细胞定位	Cell membrane,Cell projection,Single-pass type I membrane protein,filopodium membrane,lamellipodium membrane
纯化	Affinity purification

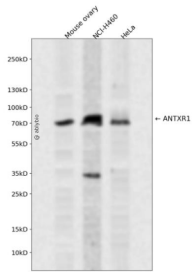
抗原信息

抗原信息	Recombinant fusion protein containing a sequence corresponding to amino acids 84-333 of human ANTXR1 (NP_060623.2).
序列	VFSTRGTTLMKLTEDREQIRQGLEELQKVLPGGDTYMHEGFERASEQIYYENRQGYRTASVIIALTDGELHEDLFFYSEREA NRSRDLGAIYVCVGVKDFNETQLARIADSKDHVFPVNDGFGALQGIHSILKKSCIEILAAEPSTICAGESFQVVVRGNGFRH ARNVDRVLCSEFKINDSVTLNEKPFVSEDYLLCPAPILKEVGMKAALQVSMNDGLSFISSSVIITTHCSLHKIASGPTTAAC ME

靶点信息

研究背景	This gene encodes a type I transmembrane protein and is a tumor-specific endothelial marker that has been implicated in colorectal cancer. The encoded protein has been shown to also be a docking protein or receptor for Bacillus anthracis toxin, the causative agent of the disease, anthrax. The binding of the protective antigen (PA) component, of the tripartite anthrax toxin, to this receptor protein mediates delivery of toxin components to the cytosol of cells. Once inside the cell, the other two components of anthrax toxin, edema factor (EF) and lethal factor (LF) disrupt normal cellular processes. Three alternatively spliced variants that encode different protein isoforms have been described.
基因ID	84168
基因名	ANTXR1
Swiss	Q9H6X2
别名	ANTXR1;ATR;GAPO;TEM8

产品验证



Western blot analysis of ANTXR1 expressed in Mouse ovary, NCI-H460, HeLa using ANTXR1 Rabbit pAb at 1:1000. Secondary antibody: HRP Goat Anti-Rabbit IgG (H+L) at 1:5000. Lysates/proteins: 30ug per lane. Blocking buffer: 5% non-fat dry milk in TBST. Detection: ECL Enhanced Kit. Exposure time: 120s.

实验步骤

访问官网浏览详情: www.ablybio.cn