

# ATP6AP2 Rabbit pAb

货号: **AYP13426**

## 产品信息

反应	Human,Mouse,Rat
宿主	Rabbit
克隆性	Polyclonal
预测反应	<b>WB:</b> Rattus norvegicus
应用	<a href="#">WB</a>
推荐浓度	<b>WB:</b> 1:500 - 1:2000
理论分子量	35kDa/39kDa
实测分子量	48kDa
形式	Liquid
保存条件	Store at -20°C. Avoid freeze / thaw cycles. Buffer: PBS with 0.02% sodium azide,50% glycerol,pH7.3.
偶联物	Unconjugated
阳性对照	SW480,Mouse kidney,Mouse brain,Mouse eye,Rat brain,Rat kidney
细胞定位	Membrane,Single-pass type I membrane protein
纯化	Affinity purification

## 抗原信息

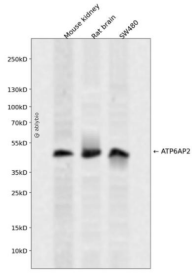
抗原信息	Recombinant fusion protein containing a sequence corresponding to amino acids 251-350 of human ATP6 AP2 (NP_005756.2).
序列	MYSLYGGNAVVELVTVKSFDTSLIRKTRTILEAKQAKNPASPYNLAYKYNFEYSVVFNMVLWIMIALALAVIITSYNIWNMDP GYDSIIRMTNQKIRMD

## 靶点信息

研究背景	This gene encodes a protein that is associated with adenosine triphosphatases (ATPases). Proton-translocating ATPases have fundamental roles in energy conservation, secondary active transport, acidification of intracellular compartments, and cellular pH homeostasis. There are three classes of ATPases- F, P, and V. The vacuolar (V-type) ATPases have a transmembrane proton-conducting sector and an extramembrane catalytic sector. The encoded protein has been found associated with the transmembrane sector of the V-type ATPases.
------	---

基因ID	10159
基因名	ATP6AP2
Swiss	O75787
别名	ATP6AP2;APT6M8-9;ATP6IP2;ATP6M8-9;ELDF10;HT028;M8-9;MRXE;MRXSH;MSTP009;PRR;RENK;XMRE;XPDS

## 产品验证



Western blot analysis of ATP6AP2 expressed in Mouse kidney,Rat brain,SW480 using ATP6AP2 Rabbit p Ab at 1:1000. Secondary antibody: HRP Goat Anti-Rabbit IgG (H+L) at 1:5000. Lysates/proteins: 30ug per lane. Blocking buffer: 5% non-fat dry milk in TBST. Detection: ECL Enhanced Kit. Exposure time: 120 S.

## 实验步骤

访问官网浏览详情: [www.ablybio.cn](http://www.ablybio.cn)