

# ETFDH Rabbit pAb

货号: **AYP13419**

## 产品信息

反应	Human,Mouse,Rat
宿主	Rabbit
克隆性	Polyclonal
预测反应	<b>WB:</b> Mus musculus
应用	<a href="#">WB</a>
推荐浓度	<b>WB:</b> 1:500 - 1:2000
理论分子量	62kDa/68kDa
实测分子量	65kDa
形式	Liquid
保存条件	Store at -20°C. Avoid freeze / thaw cycles. Buffer: PBS with 0.02% sodium azide,50% glycerol,pH7.3.
偶联物	Unconjugated
阳性对照	Mouse liver,Mouse heart,Mouse kidney,Rat liver,Rat heart
细胞定位	Mitochondrion inner membrane
纯化	Affinity purification

## 抗原信息

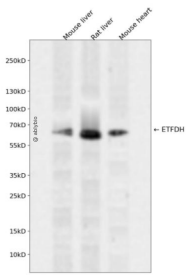
抗原信息	Recombinant fusion protein containing a sequence corresponding to amino acids 318-617 of human ETFD H (NP_004444.2).
序列	LVALGLVVGLDYQNPYLSPFREFQRWKHHPSIRPTLEGGKRIAYGARALNEGGFQSIPKLTFFPGLLIGCSPGFMNVPKIKG THTAMKSGILAAESIFNQLTSENLSKTIGLHVTEYEDNLKNSWVWKELYSVRNIRPSCHGVLGVYGGMIYTGIFYWILRGM EPWTLKHKGSDFERLKPAKDCTPIEYKPDGQISFDLLSSVALSGTNHEHDQPAHLTLRDDSDIPVNRNLSIYDGPQRFCP AGVYEFVPEQGDGFRLLQINAQNCVHCKTCDIKDPSQININWVVEGGGGPAYNGM

## 靶点信息

研究背景	This gene encodes a component of the electron-transfer system in mitochondria and is essential for electron transfer from a number of mitochondrial flavin-containing dehydrogenases to the main respiratory chain. Mutations in this gene are associated with glutaric acidemia. Alternatively spliced transcript variants that encode distinct isoforms have been observed.
------	---

基因ID	2110
基因名	ETFDH
Swiss	Q16134
别名	ETFDH;ETFQO;MADD

## 产品验证



Western blot analysis of ETFDH expressed in Mouse liver,Rat liver,Mouse heart using ETFDH Rabbit pAb at 1:1000. Secondary antibody: HRP Goat Anti-Rabbit IgG (H+L) at 1:5000. Lysates/proteins: 30ug per lane. Blocking buffer: 5% non-fat dry milk in TBST. Detection: ECL Enhanced Kit. Exposure time: 120s.

## 实验步骤

访问官网浏览详情: [www.ablybio.cn](http://www.ablybio.cn)