

GLP2R Rabbit pAb

货号: **AYP13416**

产品信息

反应	Human,Mouse
宿主	Rabbit
克隆性	Polyclonal
预测反应	WB: Mus musculus
应用	WB IHC
推荐浓度	WB: 1:100 - 1:500 IHC: 1:50 - 1:200
理论分子量	63kDa
实测分子量	63KDa
形式	Liquid
保存条件	Store at -20°C. Avoid freeze / thaw cycles. Buffer: PBS with 0.05% proclin300,50% glycerol,pH7.3.
偶联物	Unconjugated
阳性对照	HeLa,A-549,Mouse brain,Mouse stomach
细胞定位	Cell membrane,Multi-pass membrane protein
纯化	Affinity purification

抗原信息

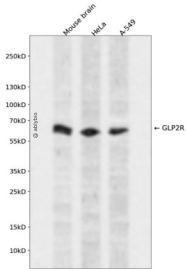
抗原信息	Recombinant fusion protein containing a sequence corresponding to amino acids 460-553 of human GLP2 R (NP_004237.1).
序列	SGCRACVLGKDFRFLGKCPKLLSEGDGAEKLRKLPQLNSGRLLHLAMRGLGELGAQPQQDHARWPRGSSLSECSEGDVTMANTMEEILEESEI

靶点信息

研究背景	This gene encodes a G protein-coupled receptor that is closely related to the glucagon receptor and binds to glucagon-like peptide-2 (GLP2). Signalling through GLP2 stimulates intestinal growth and increases villus height in the small intestine, concomitant with increased crypt cell proliferation and decreased enterocyte apoptosis.
基因ID	9340

基因名	GLP2R
Swiss	O95838
别名	GLP2R

产品验证



Western blot analysis of GLP2R expressed in Mouse brain, HeLa, A-549 using GLP2R Rabbit pAb at 1:1000. Secondary antibody: HRP Goat Anti-Rabbit IgG (H+L) at 1:5000. Lysates/proteins: 30ug per lane. Blocking buffer: 5% non-fat dry milk in TBST. Detection: ECL Enhanced Kit. Exposure time: 120s.

实验步骤

访问官网浏览详情: www.ablybio.cn