

MSRB1 Rabbit pAb

货号: **AYP13395**

产品信息

反应	Human,Mouse,Rat
宿主	Rabbit
克隆性	Polyclonal
预测反应	WB: Mus musculus
应用	WB IF/ICC
推荐浓度	WB: 1:500 - 1:2000 IF/ICC: 1:50 - 1:100
理论分子量	12kDa
实测分子量	13kDa
形式	Liquid
保存条件	Store at -20°C. Avoid freeze / thaw cycles. Buffer: PBS with 0.02% sodium azide,50% glycerol,pH7.3.
偶联物	Unconjugated
阳性对照	HL-60,SW620,Mouse brain,Mouse kidney,Rat brain
细胞定位	Cytoplasm,Nucleus,cytoskeleton
纯化	Affinity purification

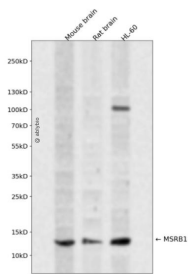
抗原信息

抗原信息	Recombinant fusion protein containing a sequence corresponding to amino acids 1-94 of human MSRB1 (NP_057416.1).
序列	MSFCSFFGGEVFNHFEPGVYVCAKCGYELFSSRSKYAHSSPWPAFTETIHADSVAKRPEHNRSEALKVSCGKCGNGLGHEFLNDGPKPGQSRF

靶点信息

研究背景	This gene encodes a selenoprotein, which contains a selenocysteine (Sec) residue at its active site. The selenocysteine is encoded by the UGA codon that normally signals translation termination. The 3' UTR of selenoprotein genes have a common stem-loop structure, the sec insertion sequence (SECIS), that is necessary for the recognition of UGA as a Sec codon rather than as a stop signal. This protein belongs to the methionine sulfoxide reductase (Msr) protein family which includes repair enzymes that reduce oxidized methionine residues in proteins. The protein encoded by this gene is expressed in a variety of adult and fetal tissues and localizes to the cell nucleus and cytosol.
基因ID	51734
基因名	MSRB1
Swiss	Q9NZV6
别名	MSRB1;HSPC270;SELR;SELX;SEPX1;SepR

产品验证



Western blot analysis of MSRB1 expressed in Mouse brain, Rat brain, HL-60 using MSRB1 Rabbit pAb at 1:1000. Secondary antibody: HRP Goat Anti-Rabbit IgG (H+L) at 1:5000. Lysates/proteins: 30ug per lane. Blocking buffer: 5% non-fat dry milk in TBST. Detection: ECL Enhanced Kit. Exposure time: 120s.

实验步骤

访问官网浏览详情: www.ablybio.cn