

SMTN Rabbit pAb

货号: **AYP13394**

产品信息

反应	Human,Mouse,Rat
宿主	Rabbit
克隆性	Polyclonal
预测反应	WB: Rattus norvegicus
应用	WB
推荐浓度	WB: 1:500 - 1:2000
理论分子量	50kDa/98kDa/99kDa/101kDa
实测分子量	117kDa
形式	Liquid
保存条件	Store at -20°C. Avoid freeze / thaw cycles. Buffer: PBS with 0.02% sodium azide,50% glycerol,pH7.3.
偶联物	Unconjugated
阳性对照	MCF7,5637,Mouse kidney,Rat lung
细胞定位	Cytoplasm,cytoskeleton
纯化	Affinity purification

抗原信息

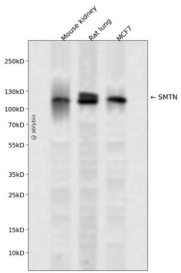
抗原信息	Recombinant fusion protein containing a sequence corresponding to amino acids 65-325 of human SMTN (NP_001193946.1).
序列	EGALRKLEVTADLAERRRIRSAIRELQRQELEREEEEALASKRFRAERQDNKENWLHSQQREAEQRAALARLAGQLESMD VEELTALLRSAGEYEERKLIRAAIRRVRAQEIEAATLAGRLYSGRPNSGSRREDSKGLAAHRLEQCEVPEREEQEQAEVSKPT PTPEGTSQDVTTVTLRAPPGSTSSPASPSSSPTPASPEPPLEPAEAQCLTAEVPGSPEPPPSPPKTTSPPEQESPTLPSTE GQVVKLLSGPKE

靶点信息

研究背景	This gene encodes a structural protein that is found exclusively in contractile smooth muscle cells. It associates with stress fibers and constitutes part of the cytoskeleton. This gene is localized to chromosome 22 q12.3, distal to the TUPLE1 locus and outside the DiGeorge syndrome deletion. Alternative splicing of this gene results in multiple transcript variants encoding distinct isoforms.
------	---

基因ID	6525
基因名	SMTN
Swiss	P53814
别名	SMTN

产品验证



Western blot analysis of SMTN expressed in Mouse kidney,Rat lung,MCF7 using SMTN Rabbit pAb at 1:1 000. Secondary antibody: HRP Goat Anti-Rabbit IgG (H+L) at 1:5000. Lysates/proteins: 30ug per lane. B locking buffer: 5% non-fat dry milk in TBST. Detection: ECL Enhanced Kit. Exposure time: 120s.

实验步骤

访问官网浏览详情: www.ablybio.cn