

# SLC26A3 Rabbit pAb

货号: **AYP13393**

## 产品信息

反应	Human
宿主	Rabbit
克隆性	Polyclonal
预测反应	<b>WB:</b> Mus musculus,Sus scrofa
应用	<a href="#">WB</a>
推荐浓度	<b>WB:</b> 1:500 - 1:2000
理论分子量	84kDa
实测分子量	85kDa
形式	Liquid
保存条件	Store at -20°C. Avoid freeze / thaw cycles. Buffer: PBS with 0.02% sodium azide,50% glycerol,pH7.3.
偶联物	Unconjugated
阳性对照	NCI-H125
细胞定位	Apical cell membrane,Membrane,Multi-pass membrane protein
纯化	Affinity purification

## 抗原信息

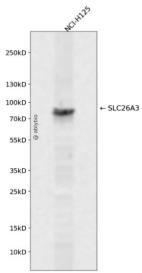
抗原信息	Recombinant fusion protein containing a sequence corresponding to amino acids 505-764 of human SLC26A3 (NP_000102.1).
序列	FPKCSTLANIGRTNIYKNKKDYDMYEPEGVKIFRCPSPIYFANIGFFRRKLIDAVGFSPRLRLRKRNKALRKIRKLQKQGLLQV TPKGFICTVDTIKDSDEELDNNQIEVLDPINTTDLPHIDWDDLP LNIEVPKISLHSLILD FS AVSFLDVSSVRGLKSILQEF IRIKVDVYIVGTDDDFIEKLNRYEFFDGEVKSSIFFLTIHDAVLHILMKKDYSTSKFNPSQEKDGKIDFTINTNGGLRNRVYEV PVETKF

## 靶点信息

研究背景	The protein encoded by this gene is a transmembrane glycoprotein that transports chloride ions across the cell membrane in exchange for bicarbonate ions. It is localized to the mucosa of the lower intestinal tract, particularly to the apical membrane of columnar epithelium and some goblet cells. The protein is essential for intestinal chloride absorption, and mutations in this gene have been associated with congenital chloride diarrhea.
------	--

基因ID	1811
基因名	SLC26A3
Swiss	P40879
别名	SLC26A3;CLD;DRA

## 产品验证



Western blot analysis of SLC26A3 expressed in NCI-H125 using SLC26A3 Rabbit pAb at 1:1000. Secondary antibody: HRP Goat Anti-Rabbit IgG (H+L) at 1:5000. Lysates/proteins: 30ug per lane. Blocking buffer: 5% non-fat dry milk in TBST. Detection: ECL Enhanced Kit. Exposure time: 120s.

## 实验步骤

访问官网浏览详情: [www.ablybio.cn](http://www.ablybio.cn)