

SRI Rabbit pAb

货号: **AYP13392**

产品信息

反应	Human,Mouse,Rat
宿主	Rabbit
克隆性	Polyclonal
预测反应	WB: Homo sapiens
应用	WB IHC IF/ICC
推荐浓度	WB: 1:500 - 1:1000 IHC: 1:50 - 1:100 IF/ICC: 1:50 - 1:100
理论分子量	20kDa/21kDa
实测分子量	20KDa
形式	Liquid
保存条件	Store at -20°C. Avoid freeze / thaw cycles. Buffer: PBS with 0.02% sodium azide,50% glycerol,pH7.3.
偶联物	Unconjugated
阳性对照	HeLa
细胞定位	Cytoplasm,Cytoplasmic side,Peripheral membrane protein,Sarcoplasmic reticulum membrane
纯化	Affinity purification

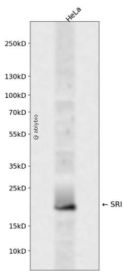
抗原信息

抗原信息	Recombinant fusion protein containing a sequence corresponding to amino acids 1-198 of human SRI (NP_003121.1).
序列	MAYPGHPGAGGGYYPGGYGGAPGGPAFPGQTQDPLYGYFAAVAGQDQGIDADELQRCLTQSGIAGGYKPFNLETCLMVSMLDRDMSGTMGFNEFKELWAVLNGWRQHFISFDTRSGTVDPQELQKALTTMGFRLSPQAVNSIAKRYSTNGKITFDDYIACCVKLRALTDTSFRRRDTAQQGVVNFYDDDFIQCVMSV

靶点信息

研究背景	This gene encodes a calcium-binding protein with multiple E-F hand domains that relocates from the cytoplasm to the sarcoplasmic reticulum in response to elevated calcium levels. In addition to regulating intracellular calcium homeostasis it also modulates excitation-contraction coupling in the heart. Alternative splicing results in multiple transcript variants encoding distinct proteins. Multiple pseudogenes exist for this gene.
基因ID	6717
基因名	SRI
Swiss	P30626
别名	SRI;CP-22;CP22;SCN;V19;sorcin

产品验证



Western blot analysis of SRI expressed in HeLa using SRI Rabbit pAb at 1:1000. Secondary antibody: HRP Goat Anti-Rabbit IgG (H+L) at 1:5000. Lysates/proteins: 30ug per lane. Blocking buffer: 5% non-fat dry milk in TBST. Detection: ECL Enhanced Kit. Exposure time: 120s.

实验步骤

访问官网浏览详情: www.ablybio.cn