

# ALPPL2 Rabbit pAb

货号: **AYP13385**

## 产品信息

反应	Human,Mouse
宿主	Rabbit
克隆性	Polyclonal
预测反应	<b>WB:</b> Gallus gallus
应用	<a href="#">WB</a>
推荐浓度	<b>WB:</b> 1:500 - 1:2000
理论分子量	57kDa
实测分子量	70kDa
形式	Liquid
保存条件	Store at -20°C. Avoid freeze / thaw cycles. Buffer: PBS with 0.02% sodium azide,50% glycerol,pH7.3.
偶联物	Unconjugated
阳性对照	HeLa,SKOV3,HepG2,Human placenta,Mouse testis
细胞定位	Cell membrane,GPI-anchor,Lipid-anchor
纯化	Affinity purification

## 抗原信息

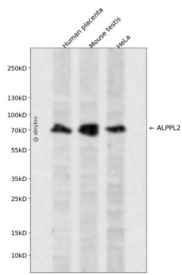
抗原信息	Recombinant fusion protein containing a sequence corresponding to amino acids 20-280 of human ALPPL2 (NP_112603.2).
序列	IIPVEENPDFWNRQAAEALGAAKKLQPAQTAAKNLIIFLGDGMGVSTVTAARILKGQKKDKLGPETFLAMDRFPYVALSKT YSVDKHPD SGATATAYLCGVKGNFQTIGLSAAARFNQCNTTRGNEVISVMNRAKKAGKSVGVTTRVQHASPAGAYA HTVNRNWYS DADVPASARQEGCQDIATQLISNMDIDVILGGGRKYMFPMPGTPDPEYPDDYSQGGTRLDGKNLVQEWLA KHQGARYVWNRTELLQASLDPS

## 靶点信息

研究背景	There are at least four distinct but related alkaline phosphatases: intestinal, placental, placental-like, and liver/bone/kidney (tissue non-specific). The product of this gene is a membrane bound glycosylated enzyme, localized to testis, thymus and certain germ cell tumors, that is closely related to both the placental and intestinal forms of alkaline phosphatase.
------	---

基因ID	251
基因名	ALPPL2
Swiss	P10696
别名	ALPPL2;ALPG;ALPPL;GCAP

## 产品验证



Western blot analysis of ALPPL2 expressed in Human placenta, Mouse testis, HeLa using ALPPL2 Rabbit p Ab at 1:1000. Secondary antibody: HRP Goat Anti-Rabbit IgG (H+L) at 1:5000. Lysates/proteins: 30ug per lane. Blocking buffer: 5% non-fat dry milk in TBST. Detection: ECL Enhanced Kit. Exposure time: 120s

## 实验步骤

访问官网浏览详情: [www.ablybio.cn](http://www.ablybio.cn)