

GPBAR1 Rabbit pAb

货号: **AYP13371**

产品信息

反应	Human,Rat
宿主	Rabbit
克隆性	Polyclonal
预测反应	WB: Mus musculus
应用	WB IF/ICC
推荐浓度	WB: 1:500 - 1:1000 IF/ICC: 1:50 - 1:200
理论分子量	35kDa
实测分子量	35KDa
形式	Liquid
保存条件	Store at -20°C. Avoid freeze / thaw cycles. Buffer: PBS with 0.05% proclin300,50% glycerol,pH7.3.
偶联物	Unconjugated
阳性对照	Rat liver
细胞定位	cytoplasm,plasma membrane
纯化	Affinity purification

抗原信息

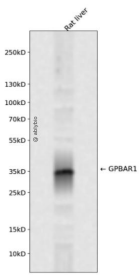
抗原信息	A synthetic peptide corresponding to a sequence within amino acids 231-330 of human GPBAR1 (NP_733800.1).
序列	LLFGLCWGPYVATLLLSVLAYEQRPPLGPGTLLSLLSLGSASAAAVPVAMGLGDQRYTAPWRAAAQRCLQGLWGRASRDSPGPSIAYHPSSQSSVDLDLN

靶点信息

研究背景	This gene encodes a member of the G protein-coupled receptor (GPCR) superfamily. This enzyme function s as a cell surface receptor for bile acids. Treatment of cells expressing this GPCR with bile acids induces the production of intracellular cAMP, activation of a MAP kinase signaling pathway, and internalization of t he receptor. The receptor is implicated in the suppression of macrophage functions and regulation of ene rgy homeostasis by bile acids. Alternative splicing results in multiple transcript variants encoding the sam e protein.
------	--

基因ID	151306
基因名	GPBAR1
Swiss	Q8TDU6
别名	BG37; TGR5; M-BAR; GPCR19; GPR131

产品验证



Western blot analysis of GPBAR1 expressed in Rat liver using GPBAR1 Rabbit pAb at 1:1000. Secondary antibody: HRP Goat Anti-Rabbit IgG (H+L) at 1:5000. Lysates/proteins: 30ug per lane. Blocking buffer: 5% non-fat dry milk in TBST. Detection: ECL Enhanced Kit. Exposure time: 120s.

实验步骤

访问官网浏览详情: www.ablybio.cn