

# SEMA3B Rabbit pAb

货号: **AYP13370**

## 产品信息

反应	Human,Mouse
宿主	Rabbit
克隆性	Polyclonal
预测反应	<b>WB:</b> Homo sapiens
应用	<a href="#">WB</a>
推荐浓度	<b>WB:</b> 1:500 - 1:2000
理论分子量	83kDa
实测分子量	83kDa
形式	Liquid
保存条件	Store at -20°C. Avoid freeze / thaw cycles. Buffer: PBS with 0.02% sodium azide,50% glycerol,pH7.3.
偶联物	Unconjugated
阳性对照	A-549,HeLa,Mouse kidney,Mouse heart
细胞定位	Endoplasmic reticulum,Secreted
纯化	Affinity purification

## 抗原信息

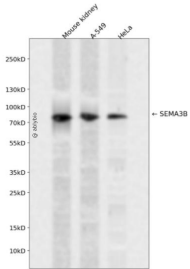
抗原信息	Recombinant fusion protein containing a sequence corresponding to amino acids 569-748 of human SEMA3B (NP_001005914.1).
序列	SSRPALLEHKVFGVEGSSAFLECEPRSLQARVEWTFQRAGVTAHTQVLAERTERTARGLLLRRLRRRDSGVYLCAAVEQ GFTQPLRRLSLHVLSTQAERLARAEAAAPPGPKLWYRDFLQLVEPGGGGSANSLRMCRPQPALQSLPLESRRKGRN RRTHAPEPRAERGPRATHW

## 靶点信息

研究背景	The protein encoded by this gene belongs to the class-3 semaphorin/collapsin family, whose members function in growth cone guidance during neuronal development. This family member inhibits axonal extension and has been shown to act as a tumor suppressor by inducing apoptosis. Alternative splicing of this gene results in multiple transcript variants.
基因ID	7869

基因名	SEMA3B
Swiss	Q13214
别名	SEMA3B;LUCA-1;SEMA5;SEMAA;SemA;semaV

## 产品验证



Western blot analysis of SEMA3B expressed in Mouse kidney,A-549,HeLa using SEMA3B Rabbit pAb at 1:1000. Secondary antibody: HRP Goat Anti-Rabbit IgG (H+L) at 1:5000. Lysates/proteins: 30ug per lane . Blocking buffer: 5% non-fat dry milk in TBST. Detection: ECL Enhanced Kit. Exposure time: 120s.

## 实验步骤

访问官网浏览详情: [www.ablybio.cn](http://www.ablybio.cn)