

— ABLYBIO, Help Your Research



# NAA20 Rabbit pAb

货号: **AYP13357**

## 产品信息

反应	Human,Mouse,Rat
宿主	Rabbit
克隆性	Polyclonal
预测反应	<b>WB:</b> Homo sapiens
应用	WB IHC IP
推荐浓度	<b>WB:</b> 1:500 - 1:2000 <b>IHC:</b> 1:50 - 1:200 <b>IP:</b> 1:50 - 1:200
理论分子量	12kDa/20kDa
实测分子量	20kDa
形式	Liquid
保存条件	Store at -20°C. Avoid freeze / thaw cycles. Buffer: PBS with 0.01% thiomersal,50% glycerol,pH7.3.
偶联物	Unconjugated
阳性对照	HeLa,Mouse brain,Mouse kidney,Rat brain
细胞定位	Cytoplasm,Nucleus
纯化	Affinity purification

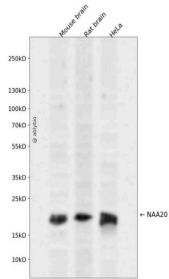
## 抗原信息

抗原信息	Recombinant fusion protein containing a sequence corresponding to amino acids 49-178 of human NAA20 (NP_057184.1).
------	--

## 靶点信息

研究背景	NAT5 is a component of N-acetyltransferase complex B (NatB). Human NatB performs cotranslational N(alpha)-terminal acetylation of methionine residues when they are followed by asparagine (Starheim et al., 2008 [PubMed 18570629]).[supplied by OMIM, Apr 2009]
基因ID	51126
基因名	NAA20
Swiss	P61599 ( <a href="https://www.uniprot.org/uniprotkb/P61599/entry">https://www.uniprot.org/uniprotkb/P61599/entry</a> )
别名	NAA20,NAT3,NAT3P,NAT5,NAT5P,dj1002M8.1,NAA20 Rabbit pAb,Methionine N-acetyltransferase,N-acetyltransferase 5,N-terminal acetyltransferase B complex catalytic subunit NAA20,N-terminal acetyltransferase B complex catalytic subunit NAT5,NatB catalytic subunit

## 产品验证



Western blot analysis of NAA20 expressed in Mouse brain,Rat brain,HeLa using NAA20 Rabbit pAb at 1:1000. Secondary antibody: HRP Goat Anti-Rabbit IgG (H+L) at 1:5000. Lysates/proteins: 30ug per lane. Blocking buffer: 5% non-fat dry milk in TBST. Detection: ECL Enhanced Kit. Exposure time: 120s.

## 实验步骤

访问官网浏览详情: [www.ablybio.cn](http://www.ablybio.cn) (<https://www.ablybio.cn/www.ablybio.cn>)