

KLF3 Rabbit pAb

货号: **AYP13344**

产品信息

反应	Human
宿主	Rabbit
克隆性	Polyclonal
预测反应	WB: Mus musculus
应用	WB IF/ICC
推荐浓度	WB: 1:500 - 1:2000 IF/ICC: 1:50 - 1:100
理论分子量	25kDa/38kDa
实测分子量	39kDa
形式	Liquid
保存条件	Store at -20°C. Avoid freeze / thaw cycles. Buffer: PBS with 0.02% sodium azide,50% glycerol,pH7.3.
偶联物	Unconjugated
阳性对照	BT-474,SKOV3
细胞定位	Nucleus
纯化	Affinity purification

抗原信息

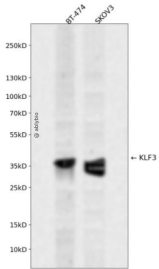
抗原信息	Recombinant fusion protein containing a sequence corresponding to amino acids 1-240 of human KLF3 (N P_057615.3).
序列	MLMFDVPVKQEAMDPVSVSYPSNYMESMKPNKYGVYSTPLPEKFFQTPEGLSHGIQMEPVDLTVNKRSSPPSAGNSPS SLKFPSSHRRASPGLSMPSSSPIKKYSPSPGVQPFQVPLSMPPVMAAALSRHGIRSPGILPVIQPVVVQPVPFMYTSHLQ QPLMVSLSEEMENSSSMQVPVIESYEKPISQKKIKIEPGIEPQRTDYYPEEMSPPLMNSVSPQALLQENHPSVIVQ

靶点信息

研究背景	Binds to the CACCC box of erythroid cell-expressed genes. May play a role in hematopoiesis (By similarity .
基因ID	51274

基因名	KLF3
Swiss	P57682
别名	KLF3;BKLF

产品验证



Western blot analysis of KLF3 expressed in BT-474,SKOV3 using KLF3 Rabbit pAb at 1:1000. Secondary antibody: HRP Goat Anti-Rabbit IgG (H+L) at 1:5000. Lysates/proteins: 30ug per lane. Blocking buffer: 5% non-fat dry milk in TBST. Detection: ECL Enhanced Kit. Exposure time: 120s.

实验步骤

访问官网浏览详情: www.ablybio.cn