

Phospho-MLKL-S454 Rabbit pAb

货号: AYP13332

产品信息

反应	Human,Mouse,Rat
宿主	Rabbit
克隆性	Polyclonal
预测反应	WB: Homo sapiens
应用	WB
推荐浓度	WB: 1:500 - 1:2000
理论分子量	53kDa/54kDa
实测分子量	54kDa
形式	Liquid
保存条件	Store at -20°C. Avoid freeze / thaw cycles. Buffer: PBS with 0.05% proclin300,50% glycerol,pH7.3.
偶联物	Unconjugated
阳性对照	HeLa
细胞定位	Cell membrane,Cytoplasm
纯化	Affinity purification

抗原信息

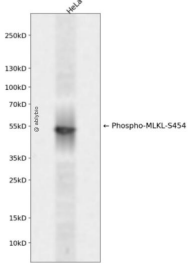
抗原信息	A synthetic phosphorylated peptide around S454 of human MLKL (NP_689862.1).
序列	DPSVR

靶点信息

研究背景	This gene belongs to the protein kinase superfamily. The encoded protein contains a protein kinase-like domain; however, is thought to be inactive because it lacks several residues required for activity. This protein plays a critical role in tumor necrosis factor (TNF)-induced necroptosis, a programmed cell death process, via interaction with receptor-interacting protein 3 (RIP3), which is a key signaling molecule in necroptosis pathway. Inhibitor studies and knockdown of this gene inhibited TNF-induced necrosis. High levels of this protein and RIP3 are associated with inflammatory bowel disease in children. Alternatively spliced transcript variants have been described for this gene.
基因ID	197259

基因名	MLKL
Swiss	Q8NB16
别名	MLKL; hMLKL; mixed lineage kinase domain-like protein

产品验证



Western blot analysis of Phospho-MLKL-S454 expressed in HeLa using Phospho-MLKL-S454 Rabbit pAb at 1:1000. Secondary antibody: HRP Goat Anti-Rabbit IgG (H+L) at 1:5000. Lysates/proteins: 30ug per lane. Blocking buffer: 5% non-fat dry milk in TBST. Detection: ECL Enhanced Kit. Exposure time: 120s.

实验步骤

访问官网浏览详情: www.ablybio.cn