

# KPNA5 Rabbit pAb

货号: **AYP13329**

## 产品信息

反应	Human,Mouse,Rat
宿主	Rabbit
克隆性	Polyclonal
预测反应	<b>WB:</b> Homo sapiens
应用	<a href="#">WB</a>
推荐浓度	<b>WB:</b> 1:500 - 1:2000
理论分子量	60kDa
实测分子量	60kDa
形式	Liquid
保存条件	Store at -20°C. Avoid freeze / thaw cycles. Buffer: PBS with 0.02% sodium azide,50% glycerol,pH7.3.
偶联物	Unconjugated
阳性对照	Jurkat,SKOV3,HepG2,NCI-H460,Mouse testis,Mouse liver,Mouse heart,Rat liver
细胞定位	Cytoplasm
纯化	Affinity purification

## 抗原信息

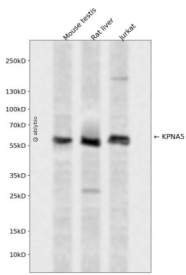
抗原信息	Recombinant fusion protein containing a sequence corresponding to amino acids 1-240 of human KPNA5 (NP_002260.2).
序列	MDAMASPGKDNYRMKSYKNKALNPQEMRRRREEEGIQLRKQKREEQLFKRRNVYLPRNDESMLESPIQDPDISSTVPIPEE EVVTTDMVMQIFSNADQQLTATQKFRKLLSKEPNPPIDQVIQKPGVVQRFVKFLERNENCTLQFEAAWALTNIASGTLFH TKVVIETGAVPIFIKLLNSEHEDVQEAVWALGNIAGDNAECRDFVLNCEILPPLLELLTNSNRLTTTRNAVWALSNL

## 靶点信息

研究背景	The transport of molecules between the nucleus and the cytoplasm in eukaryotic cells is mediated by the nuclear pore complex (NPC) which consists of 60-100 proteins and is probably 120 million daltons in molecular size. Small molecules (up to 70 kD) can pass through the nuclear pore by nonselective diffusion; larger molecules are transported by an active process. Most nuclear proteins contain short basic amino acid sequences known as nuclear localization signals (NLSs). KPNA5 protein belongs to the importin alpha protein family and is thought to be involved in NLS-dependent protein import into the nucleus.
------	---

基因ID	3841
基因名	KPNA5
Swiss	O15131
别名	KPNA5;IPOA6;SRP6

## 产品验证



Western blot analysis of KPNA5 expressed in Mouse testis,Rat liver,Jurkat using KPNA5 Rabbit pAb at 1:1000. Secondary antibody: HRP Goat Anti-Rabbit IgG (H+L) at 1:5000. Lysates/proteins: 30ug per lane. Blocking buffer: 5% non-fat dry milk in TBST. Detection: ECL Enhanced Kit. Exposure time: 120s.

## 实验步骤

访问官网浏览详情: [www.ablybio.cn](http://www.ablybio.cn)