

# CARD10 Rabbit pAb

货号: **AYP13323**

## 产品信息

反应	Human,Mouse,Rat
宿主	Rabbit
克隆性	Polyclonal
预测反应	<b>WB:</b> Mus musculus
应用	<a href="#">WB</a> <a href="#">IHC</a> <a href="#">IF/ICC</a>
推荐浓度	<b>WB:</b> 1:100 - 1:500 <b>IHC:</b> 1:50 - 1:200 <b>IF/ICC:</b> 1:50 - 1:200
理论分子量	82kDa/115kDa
实测分子量	116KDa
形式	Liquid
保存条件	Store at -20°C. Avoid freeze / thaw cycles. Buffer: PBS with 0.02% sodium azide,50% glycerol,pH7.3.
偶联物	Unconjugated
阳性对照	Mouse kidney,Rat kidney
细胞定位	Cytoplasm
纯化	Affinity purification

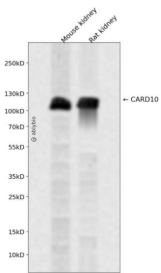
## 抗原信息

抗原信息	Recombinant fusion protein containing a sequence corresponding to amino acids 863-1032 of human CARD10 (NP_055365.2).
序列	LLDLPSSRLDFQVCPAESLSGEELCPSSAPGAPKAQPATPGLGSRIRAIQESVGKKHCLLELGARGVRELQNEIYPIVIHVEV TEKNVREVRGLLGRPGWRDSELLRQCRGSEQVLWGLPCSWVQVPAHEWGHAEELAKVVRGRILQEQRLLVWVECGSS RGCPSSSEA

## 靶点信息

研究背景	The caspase recruitment domain (CARD) is a protein module that consists of 6 or 7 antiparallel alpha helices. It participates in apoptosis signaling through highly specific protein-protein homophilic interactions. Like several other CARD proteins, CARD10 belongs to the membrane-associated guanylate kinase (MAGUK) family and activates NF-kappa-B (NFKB; see MIM 164011) through BCL10 (MIM 603517) (Wang et al., 2001 [PubMed 11259443]).[supplied by OMIM, Mar 2008]
基因ID	29775
基因名	CARD10
Swiss	Q9BWT7
别名	CARD10;BIMP1;CARMA3

## 产品验证



Western blot analysis of CARD10 expressed in Mouse kidney,Rat kidney using CARD10 Rabbit pAb at 1:1000. Secondary antibody: HRP Goat Anti-Rabbit IgG (H+L) at 1:5000. Lysates/proteins: 30ug per lane. Blocking buffer: 5% non-fat dry milk in TBST. Detection: ECL Enhanced Kit. Exposure time: 120s.

## 实验步骤

访问官网浏览详情: [www.ablybio.cn](http://www.ablybio.cn)