

— ABLYBIO, Help Your Research



# SETDB2 Rabbit pAb

货号: **AYP13321**

## 产品信息

反应	Mouse,Rat
宿主	Rabbit
克隆性	Polyclonal
预测反应	<b>WB:</b> Homo sapiens
应用	WB
推荐浓度	<b>WB:</b> 1:500 - 1:1000
理论分子量	80kDa/81kDa
实测分子量	100kDa
形式	Liquid
保存条件	Store at -20°C. Avoid freeze / thaw cycles. Buffer: PBS with 0.01% thiomersal,50% glycerol,pH7.3.
偶联物	Unconjugated
阳性对照	Mouse heart,Rat heart
细胞定位	Chromosome,Nucleus
纯化	Affinity purification

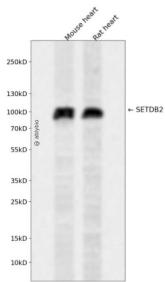
## 抗原信息

抗原信息	Recombinant fusion protein containing a sequence corresponding to amino acids 148-378 of human SETDB2 (NP_114121.2).
------	--

## 靶点信息

研究背景	This gene encodes a member of a family of proteins that contain a methyl-CpG-binding domain (MBD) and a SET domain and function as histone methyltransferases. This protein is recruited to heterochromatin and plays a role in the regulation of chromosome segregation. This region is commonly deleted in chronic lymphocytic leukemia. Naturally-occurring readthrough transcription occurs from this gene to the downstream PHF11 (PHD finger protein 11) gene. Alternative splicing results in multiple transcript variants.
基因ID	83852
基因名	SETDB2
Swiss	Q96T68 ( <a href="https://www.uniprot.org/uniprotkb/Q96T68/entry">https://www.uniprot.org/uniprotkb/Q96T68/entry</a> )
别名	SETDB2,C13orf4,CLLD8,CLLL8,KMT1F,SETDB2 Rabbit pAb,Chronic lymphocytic leukemia deletion region gene 8 protein,Lysine N-methyltransferase 1F,SET domain bifurcated 2

## 产品验证



Western blot analysis of SETDB2 expressed in Mouse heart,Rat heart using SETDB2 Rabbit pAb at 1:1000. Secondary antibody: HRP Goat Anti-Rabbit IgG (H+L) at 1:5000. Lysates/proteins: 30ug per lane. Blocking buffer: 5% non-fat dry milk in TBST. Detection: ECL Enhanced Kit. Exposure time: 120s.

## 实验步骤

访问官网浏览详情: [www.ablybio.cn](http://www.ablybio.cn) (<https://www.ablybio.cn/www.ablybio.cn>)