

ORAI1 Rabbit pAb

货号: **AYP13316**

产品信息

反应	Human,Mouse,Rat
宿主	Rabbit
克隆性	Polyclonal
预测反应	WB: Rattus norvegicus
应用	WB
推荐浓度	WB: 1:500 - 1:1000
理论分子量	25kDa/32kDa
实测分子量	32-55KDa
形式	Liquid
保存条件	Store at -20°C. Avoid freeze / thaw cycles. Buffer: PBS with 0.01% thiomersal,50% glycerol,pH7.3.
偶联物	Unconjugated
阳性对照	HeLa,MCF7,Mouse lung,Mouse testis,Mouse spleen,Rat lung,Rat liver
细胞定位	Cell membrane,Cytoplasmic vesicle,Multi-pass membrane protein,autophagosome
纯化	Affinity purification

抗原信息

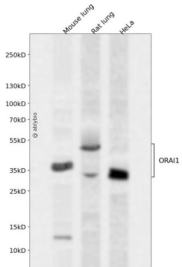
抗原信息	A synthetic peptide corresponding to a sequence within amino acids 1-100 of human ORAI1 (NP_116179.2).
序列	MHPEPAPPPSRSSPELPPSGGTTSGSRRSRRRSGDGEPPGAPPPPSAVTYPDWIGQSYSEVMSLNEHSMQALSWRKL YLSRAKLGASSRTSALLSGFA

靶点信息

研究背景	The protein encoded by this gene is a membrane calcium channel subunit that is activated by the calcium sensor STIM1 when calcium stores are depleted. This type of channel is the primary way for calcium influx into T-cells. Defects in this gene are a cause of immune dysfunction with T-cell inactivation due to calcium entry defect type 1 (IDTICED1).
基因ID	84876

基因名	Orai1
Swiss	Q96D31
别名	CRACM1;IMD9;ORAT1;TAM2;TMEM142A;ORAI1

产品验证



Western blot analysis of Orai1 expressed in Mouse lung,Rat lung,HeLa using Orai1 Rabbit pAb at 1:1000. Secondary antibody: HRP Goat Anti-Rabbit IgG (H+L) at 1:5000. Lysates/proteins: 30ug per lane. Blocking buffer: 5% non-fat dry milk in TBST. Detection: ECL Enhanced Kit. Exposure time: 120s.

实验步骤

访问官网浏览详情: www.ablybio.cn