

ALDH1A2 Rabbit pAb

货号: **AYP13308**

产品信息

反应	Human,Mouse,Rat
宿主	Rabbit
克隆性	Polyclonal
预测反应	IF: Danio rerio
应用	WB IHC IF/ICC
推荐浓度	WB: 1:500 - 1:2000 IHC: 1:50 - 1:200 IF/ICC: 1:50 - 1:200
理论分子量	46kDa/53kDa/54kDa/56kDa
实测分子量	57kDa
形式	Liquid
保存条件	Store at -20°C. Avoid freeze / thaw cycles. Buffer: PBS with 0.02% sodium azide,50% glycerol,pH7.3.
偶联物	Unconjugated
阳性对照	SW620,293T,Mouse liver,Mouse kidney,Mouse testis,Mouse lung,Rat liver
细胞定位	Cytoplasm
纯化	Affinity purification

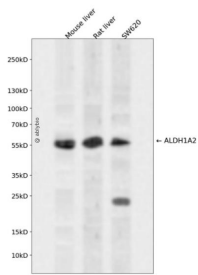
抗原信息

抗原信息	Recombinant fusion protein containing a sequence corresponding to amino acids 1-180 of human ALDH1 A2 (NP_733797.1).
序列	MTSSKIEMPGEVKADPAALMASLHLLPSPTPNLEIKYTKIFINNEWQNSESGRVFPVYNPATGEQVCEVQEADKADIDKAV QAARLAFSLGSLVRRMDASERGRLLDKLADLVERDRAVLATMESLNGGKPFLLQAFYVDLQGVIKTFRYYAGWADKIHGM TIPVDGDYFTFTRHEPIGVC

靶点信息

研究背景	This protein belongs to the aldehyde dehydrogenase family of proteins. The product of this gene is an enzyme that catalyzes the synthesis of retinoic acid (RA) from retinaldehyde. Retinoic acid, the active derivative of vitamin A (retinol), is a hormonal signaling molecule that functions in developing and adult tissues. The studies of a similar mouse gene suggest that this enzyme and the cytochrome CYP26A1, concurrently establish local embryonic retinoic acid levels which facilitate posterior organ development and prevent spina bifida. Four transcript variants encoding distinct isoforms have been identified for this gene.
基因ID	8854
基因名	ALDH1A2
Swiss	O94788
别名	ALDH1A2;RALDH(II);RALDH2;RALDH2-T

产品验证



Western blot analysis of ALDH1A2 expressed in Mouse liver, Rat liver, SW620 using ALDH1A2 Rabbit pAb at 1:1000. Secondary antibody: HRP Goat Anti-Rabbit IgG (H+L) at 1:5000. Lysates/proteins: 30ug per lane. Blocking buffer: 5% non-fat dry milk in TBST. Detection: ECL Enhanced Kit. Exposure time: 120 S.

实验步骤

访问官网浏览详情: www.ablybio.cn