

HLA-DRB1 Rabbit pAb

货号: **AYP13298**

产品信息

反应	Human,Mouse
宿主	Rabbit
克隆性	Polyclonal
预测反应	IF: Homo sapiens
应用	WB
推荐浓度	WB: 1:500 - 1:2000
理论分子量	30kDa
实测分子量	30kDa
形式	Liquid
保存条件	Store at -20°C. Avoid freeze / thaw cycles. Buffer: PBS with 0.02% sodium azide,50% glycerol,pH7.3.
偶联物	Unconjugated
阳性对照	MCF7,Mouse thymus,Mouse spleen,Mouse heart
细胞定位	Cell membrane,Endoplasmic reticulum membrane,Endosome membrane,Golgi apparatus,Late endosome membrane,Lysosome membrane,Single-pass type I membrane protein,trans-Golgi network membrane
纯化	Affinity purification

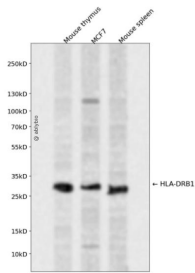
抗原信息

抗原信息	Recombinant fusion protein containing a sequence corresponding to amino acids 30-230 of human HLA-D RB1 (NP_002115.2).
序列	GDTRPRFLWQPKRECHFFNGTERVRFDRYFYNQEESVRFSDVGEFRAVTELGPRDAEYWNSQKDILEQARAAVDTYC RHNYGVVESFTVQRRVQPKVTVYPSKTQPLQHNNLLVCSVSGFYPGSIEVRWFLNGQEEKAGMVSTGLIQNGDWTFQTL VMLETVPRSGEVYTCQVEHPSVTSPLTVEWRARSESAQSKMLS

靶点信息

研究背景	HLA-DRB1 belongs to the HLA class II beta chain paralogs. The class II molecule is a heterodimer consisting of an alpha (DRA) and a beta chain (DRB), both anchored in the membrane. It plays a central role in the immune system by presenting peptides derived from extracellular proteins. Class II molecules are expressed in antigen presenting cells (APC: B lymphocytes, dendritic cells, macrophages). The beta chain is approximately 26-28 kDa. It is encoded by 6 exons. Exon one encodes the leader peptide; exons 2 and 3 encode the two extracellular domains; exon 4 encodes the transmembrane domain; and exon 5 encodes the cytoplasmic tail. Within the DR molecule the beta chain contains all the polymorphisms specifying the peptide binding specificities. Hundreds of DRB1 alleles have been described and typing for these polymorphisms is routinely done for bone marrow and kidney transplantation. DRB1 is expressed at a level five times higher than its paralogs DRB3, DRB4 and DRB5. DRB1 is present in all individuals. Allelic variants of DRB1 are linked with either none or one of the genes DRB3, DRB4 and DRB5. There are 4 related pseudo genes: DRB2, DRB6, DRB7, DRB8 and DRB9.
基因ID	3123
基因名	HLA-DRB1
Swiss	P01911,P01912,Q29974
别名	HLA-DRB1;DRB1;HLA-DR1B;HLA-DRB;SS1;major histocompatibility complex;class II;DR beta 1

产品验证



Western blot analysis of HLA-DRB1 expressed in Mouse thymus, MCF7, Mouse spleen using HLA-DRB1 Rabbit pAb at 1:1000. Secondary antibody: HRP Goat Anti-Rabbit IgG (H+L) at 1:5000. Lysates/proteins: 30ug per lane. Blocking buffer: 5% non-fat dry milk in TBST. Detection: ECL Enhanced Kit. Exposure time: 120s.

实验步骤

访问官网浏览详情: www.ablybio.cn