

NAT8 Rabbit pAb

货号: **AYP13292**

产品信息

反应	Human,Mouse,Rat
宿主	Rabbit
克隆性	Polyclonal
预测反应	WB: Homo sapiens
应用	WB IHC
推荐浓度	WB: 1:500 - 1:2000 IHC: 1:50 - 1:100
理论分子量	25kDa
实测分子量	26kDa
形式	Liquid
保存条件	Store at -20°C. Avoid freeze / thaw cycles. Buffer: PBS with 0.02% sodium azide,50% glycerol,pH7.3.
偶联物	Unconjugated
阳性对照	293T,Mouse spleen,Mouse testis,Mouse lung,Rat kidney
细胞定位	Endoplasmic reticulum membrane,Endoplasmic reticulum-Golgi intermediate compartment membrane,Single-pass type II membrane protein
纯化	Affinity purification

抗原信息

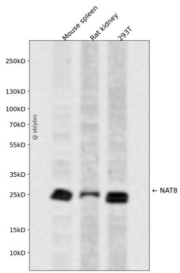
抗原信息	Recombinant fusion protein containing a sequence corresponding to amino acids 61-220 of human NAT8 (Q9UHE5).
序列	LLALVFSISLFPALWFLAKKPWTEYVDMTLCITDMSDITKSYLSERGSFCFWVAESEEEKVGMVGPVDDPTLREKRLQLFHLFVNSEHRRQGIKALVRTVLQFARDQGYSEVILDTGTIQLSAMALYQSMGFKKTGQSFVWARLVALHTVHFIYHLP

靶点信息

研究背景	This gene, isolated using the differential display method to detect tissue-specific genes, is specifically expressed in kidney and liver. The encoded protein shows amino acid sequence similarity to N-acetyltransferases. A similar protein in Xenopus affects cell adhesion and gastrulation movements, and may be localized in the secretory pathway. A highly similar paralog is found in a cluster with this gene.
------	--

基因ID	9027
基因名	NAT8
Swiss	Q9UHE5
别名	NAT8;ATase2;CCNAT;CML1;GLA;Hcml1;TSC501;TSC510

产品验证



Western blot analysis of NAT8 expressed in Mouse spleen,Rat kidney,293T using NAT8 Rabbit pAb at 1:1000. Secondary antibody: HRP Goat Anti-Rabbit IgG (H+L) at 1:5000. Lysates/proteins: 30ug per lane. Blocking buffer: 5% non-fat dry milk in TBST. Detection: ECL Enhanced Kit. Exposure time: 120s.

实验步骤

访问官网浏览详情: www.ablybio.cn