

KLHL7 Rabbit pAb

货号: **AYP13288**

产品信息

反应	Human,Mouse
宿主	Rabbit
克隆性	Polyclonal
预测反应	WB: Homo sapiens
应用	WB
推荐浓度	WB: 1:1000 - 1:5000
理论分子量	16kDa/18kDa/60kDa/63kDa/65kDa
实测分子量	66kDa
形式	Liquid
保存条件	Store at -20°C. Avoid freeze / thaw cycles. Buffer: PBS with 0.01% thiomersal,50% glycerol,pH7.3.
偶联物	Unconjugated
阳性对照	A-431,Mouse testis,Mouse thymus,Mouse brain
细胞定位	Nucleus
纯化	Affinity purification

抗原信息

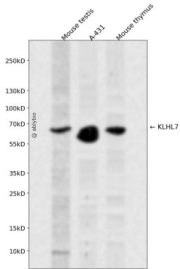
抗原信息	A synthetic peptide corresponding to a sequence within amino acids 200-300 of human KLHL7 (NP_061334.4).
序列	QAEPLIQDNPECLKMVISGMRYHLLSPEDREELVDGTRPRRKKHDYRIALFGGSQPQSCRYFNPKDYSWTDIRCPFEKRRD AACVFWDNVVYILGGSQLFP

靶点信息

研究背景	This gene encodes a BTB-Kelch-related protein. The encoded protein may be involved in protein degradation. Mutations in this gene have been associated with retinitis pigmentosa 42.
基因ID	55975
基因名	KLHL7

Swiss	Q8IXQ5
别名	KLHL7;CISS3;KLHL6;SBB126

产品验证



Western blot analysis of KLHL7 expressed in Mouse testis,A-431,Mouse thymus using KLHL7 Rabbit pAb at 1:1000. Secondary antibody: HRP Goat Anti-Rabbit IgG (H+L) at 1:5000. Lysates/proteins: 30ug per lane. Blocking buffer: 5% non-fat dry milk in TBST. Detection: ECL Enhanced Kit. Exposure time: 120s.

实验步骤

访问官网浏览详情: www.ablybio.cn