

# Cadherin 16 Rabbit pAb

货号: **AYP13282**

## 产品信息

反应	Human,Mouse,Rat
宿主	Rabbit
克隆性	Polyclonal
预测反应	<b>IHC:</b> Mus musculus
应用	<a href="#">WB</a> <a href="#">IHC</a> <a href="#">IF/ICC</a>
推荐浓度	<b>WB:</b> 1:500 - 1:2000 <b>IHC:</b> 1:50 - 1:100 <b>IF/ICC:</b> 1:50 - 1:100
理论分子量	79kDa/85kDa/87kDa/89kDa
实测分子量	110kDa
形式	Liquid
保存条件	Store at -20°C. Avoid freeze / thaw cycles. Buffer: PBS with 0.02% sodium azide,50% glycerol,pH7.3.
偶联物	Unconjugated
阳性对照	A-549,293T,HepG2,Mouse kidney
细胞定位	Cell membrane,Single-pass type I membrane protein
纯化	Affinity purification

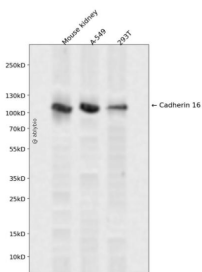
## 抗原信息

抗原信息	Recombinant fusion protein containing a sequence corresponding to amino acids 19-230 of human Cadherin 16 (NP_004053.1).
序列	KAQPAELSVEVPENYGGNFPLYLTKLPLPREGAEGQIVLSGDSGKATEGPFAMDPDSGFLLVTRALDREEQAEYQLQVTLEMQDGHVLWGPQPVLVHVKDENDQVPHFSQAIYRARLSRGTRPGIPFLFLEASDRDEPGTANSDLRFHILSQAPAPSPDMFQLEPRLGALALSPKGGTSLDHALERTYQLLVQVKMDMGDQASGHQATATVE

## 靶点信息

研究背景	This gene is a member of the cadherin superfamily, genes encoding calcium-dependent, membrane-associated glycoproteins. Mapped to a previously identified cluster of cadherin genes on chromosome 16q22.1, the gene localizes with superfamily members CDH1, CDH3, CDH5, CDH8 and CDH11. The protein consists of an extracellular domain containing 6 cadherin domains, a transmembrane region and a truncated cytoplasmic domain but lacks the prosequence and tripeptide HAV adhesion recognition sequence typical of most classical cadherins. Expression is exclusively in kidney, where the protein functions as the principal mediator of homotypic cellular recognition, playing a role in the morphogenic direction of tissue development. Alternatively spliced transcript variants encoding distinct isoforms have been identified.
基因ID	1014
基因名	CDH16
Swiss	O75309
别名	CDH16

## 产品验证



Western blot analysis of Cadherin 16 expressed in Mouse kidney, A-549, 293T using Cadherin 16 Rabbit pAb at 1:1000. Secondary antibody: HRP Goat Anti-Rabbit IgG (H+L) at 1:5000. Lysates/proteins: 30ug per lane. Blocking buffer: 5% non-fat dry milk in TBST. Detection: ECL Enhanced Kit. Exposure time: 120s.

## 实验步骤

访问官网浏览详情: [www.ablybio.cn](http://www.ablybio.cn)