

PRICKLE2 Rabbit pAb

货号: **AYP13270**

产品信息

反应	Human,Mouse,Rat
宿主	Rabbit
克隆性	Polyclonal
预测反应	PCP Protein: Oryctolagus cuniculus
应用	WB IF/ICC
推荐浓度	WB: 1:500 - 1:2000 IF/ICC: 1:50 - 1:100
理论分子量	95kDa
实测分子量	126kDa
形式	Liquid
保存条件	Store at -20°C. Avoid freeze / thaw cycles. Buffer: PBS with 0.02% sodium azide,50% glycerol,pH7.3.
偶联物	Unconjugated
阳性对照	Mouse brain,Rat brain
细胞定位	Nucleus membrane
纯化	Affinity purification

抗原信息

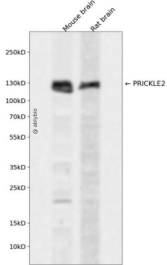
抗原信息	Recombinant fusion protein containing a sequence corresponding to amino acids 615-844 of human PRICKLE2 (NP_942559.1).
序列	QEMEGNLHQLSNPIGYRDLQSHGRMHQSDFDFDGGMAGSKLPGQEGVRIQPMSERTRRRATSRDDNRRFRPHRSRRSR RSRSDNALHLASEREAISRLKDRPPLRAREDYDQFMRQRSFQESMGHGSRRDLYGQCPRTVSDLALQNAFGDRWGPYF AEYDWCSTCSSSESSESDNEGYFLGPEIPQPARLRYVTSEDELLHKYSSYGLPKSSTLGGRGQLHSRKRQKSKNCIIS

靶点信息

研究背景	This gene encodes a homolog of Drosophila prickle. The exact function of this gene is not known, however, studies in mice suggest that it may be involved in seizure prevention. Mutations in this gene are associated with progressive myoclonic epilepsy type 5.
基因ID	166336

基因名	PRICKLE2
Swiss	Q7Z3G6
别名	PRICKLE2;EPM5

产品验证



Western blot analysis of PRICKLE2 expressed in Mouse brain,Rat brain using PRICKLE2 Rabbit pAb at 1:10 00. Secondary antibody: HRP Goat Anti-Rabbit IgG (H+L) at 1:5000. Lysates/proteins: 30ug per lane. Blocking buffer: 5% non-fat dry milk in TBST. Detection: ECL Enhanced Kit. Exposure time: 120s.

实验步骤

访问官网浏览详情: www.ablybio.cn