

ANAPC2 Rabbit pAb

货号: **AYP13268**

产品信息

反应	Mouse,Rat
宿主	Rabbit
克隆性	Polyclonal
预测反应	WB: Homo sapiens
应用	WB IHC
推荐浓度	WB: 1:500 - 1:2000 IHC: 1:100 - 1:500
理论分子量	93kDa
实测分子量	102kDa
形式	Liquid
保存条件	Store at -20°C. Avoid freeze / thaw cycles. Buffer: PBS with 0.01% thiomersal,50% glycerol,pH7.3.
偶联物	Unconjugated
阳性对照	Mouse brian,Mouse kidney,Rat brian,Rat kidney
细胞定位	cytosol,nucleoplasm
纯化	Affinity purification

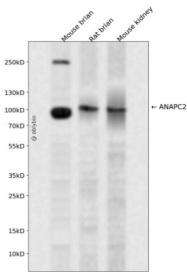
抗原信息

抗原信息	A synthetic peptide corresponding to a sequence within amino acids 400-500 of human ANAPC2 (NP_037498.1).
序列	YISAIKALRVLDPSMVILEVACEPIRRYLRTREDTVLRQIVAGLTGDSGDTGDLAVELSKTDPASLETGQDSEDDSGEPEDWV PDPVDADPGKSSSKRRSSD

靶点信息

研究背景	A large protein complex, termed the anaphase-promoting complex (APC), or the cyclosome, promotes metaphase-anaphase transition by ubiquitinating its specific substrates such as mitotic cyclins and anaphase inhibitor, which are subsequently degraded by the 26S proteasome. Biochemical studies have shown that the vertebrate APC contains eight subunits. The composition of the APC is highly conserved in organisms from yeast to humans. The product of this gene is a component of the complex and shares sequence similarity with a recently identified family of proteins called cullins, which may also be involved in ubiquitin-mediated degradation.
基因ID	29882
基因名	ANAPC2
Swiss	Q9UJX6
别名	ANAPC2;APC2

产品验证



Western blot analysis of ANAPC2 expressed in Mouse brain, Rat brain, Mouse kidney using ANAPC2 Rabbit pAb at 1:1000. Secondary antibody: HRP Goat Anti-Rabbit IgG (H+L) at 1:5000. Lysates/proteins: 30ug per lane. Blocking buffer: 5% non-fat dry milk in TBST. Detection: ECL Enhanced Kit. Exposure time: 120s.

实验步骤

访问官网浏览详情: www.ablybio.cn