

# CD66b/CEACAM8 Rabbit pAb

货号: **AYP13264**

## 产品信息

反应	Human
宿主	Rabbit
克隆性	Polyclonal
预测反应	<b>WB:</b> Homo sapiens
应用	<a href="#">WB</a> <a href="#">IF/ICC</a>
推荐浓度	<b>WB:</b> 1:500 - 1:2000 <b>IF/ICC:</b> 1:50 - 1:200
理论分子量	38kDa
实测分子量	38kDa
形式	Liquid
保存条件	Store at -20°C. Avoid freeze / thaw cycles. Buffer: PBS with 0.02% sodium azide, 50% glycerol, pH7.3.
偶联物	Unconjugated
阳性对照	
细胞定位	Cell membrane, GPI-anchor, Lipid-anchor
纯化	Affinity purification

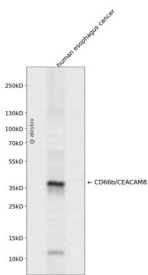
## 抗原信息

抗原信息	Recombinant fusion protein containing a sequence corresponding to amino acids 35-320 of human CD66b /CEACAM8 (NP_001807.2).
序列	QLTIEAVPSNAAEGKEVLLLVHNLDPQDPRGYNWYKGETVDANRRIIGYVISNQQITPGPAYSNRETIYPNASLLMRNVTRND TGSYTLQVIKLNLMSEEVGTGQFSVHPETPKPSISSNNSNPVEDKDAVAFTCEPETQNTTYLWWVNGQSLPVSRLQLSNG NRTLTLVTRNDVGPYECEIQNPASANFSDPVTNLVLYGPDAPTISPSDTYYHAGVNLNLSCHAASNPPSQYSWSVNGTF QQYTQKLFIPNITTKNSGSYACHTTNSATGRNRTTVRMITVSD

## 靶点信息

研究背景	Carcinoembryonic Antigen-Related Cell Adhesion Molecule 8 (CEACAM8) is a single chain, GPI-anchored, highly glycosylated protein which belongs to the immunoglobulin superfamily and the carcinoembryonic antigen(CEA) family. CEACAM8 is expressed by neutrophils and eosinophils, and serves as a binding partner for CEACAM-6 and Galectin-3. It contains two Ig-like C2-type (immunoglobulin-like) domains and one Ig-like V-type (immunoglobulin-like) domain. Mature human CEACAM8 is a 287 amino acid GPI-linked glycoprotein. CEACAM family members are a set of widely expressed proteins involved in several biological functions, including cell adhesion, migration, signal transduction, and the regulation of gene expression. Abnormal overexpression and downregulation of some CEACAMs have been described in tumor cells.
基因ID	1088
基因名	CEACAM8
Swiss	P31997
别名	CEACAM8;CD66b;CD67;CGM6;NCA-95

## 产品验证



Western blot analysis of CD66b/CEACAM8 expressed in human esophagus cancer using CD66b/CEACAM8 Rabbit pAb at 1:1000. Secondary antibody: HRP Goat Anti-Rabbit IgG (H+L) at 1:5000. Lysates/proteins: 30ug per lane. Blocking buffer: 5% non-fat dry milk in TBST. Detection: ECL Enhanced Kit. Exposure time: 120s.

## 实验步骤

访问官网浏览详情: [www.ablybio.cn](http://www.ablybio.cn)