

PLCB2 Rabbit pAb

货号: **AYP13260**

产品信息

反应	Human,Mouse,Rat
宿主	Rabbit
克隆性	Polyclonal
预测反应	WB: Homo sapiens
应用	WB
推荐浓度	WB: 1:500 - 1:1000
理论分子量	132kDa/133kDa/134kDa
实测分子量	140KDa
形式	Liquid
保存条件	Store at -20°C. Avoid freeze / thaw cycles. Buffer: PBS with 0.05% proclin300,50% glycerol,pH7.3.
偶联物	Unconjugated
阳性对照	HEL,Rat lung
细胞定位	cytosol,G-protein beta/gamma-subunit complex,Golgi apparatus,neuronal dense core vesicle,plasma membrane
纯化	Affinity purification

抗原信息

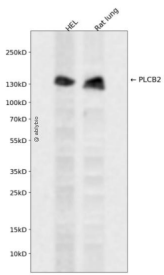
抗原信息	Recombinant fusion protein containing a sequence corresponding to amino acids 1-199 of human PLCB2 (NP_004564.2).
序列	MSELLNPVLLPPKVKAYLSQGERFIKWDETTVASPVILRVDPKGYLYWTYQSKEMEFLDITSIRDTRFGKFAKMPKSQKLR DVFNMDFPDNSFLKLTLVVSGPDMVDLTFHNFVSYKENVGKAWAEDVLALVKHPLTANASRSTFLDKILVCLKMQLNSE GKIPVKNFFQMFPADRKRVEAALSACHLPKGKNDAIN

靶点信息

研究背景	The protein encoded by this gene is a phosphodiesterase that catalyzes the hydrolysis of phosphatidylinositol 4,5-bisphosphate to the second messengers inositol 1,4,5-trisphosphate (IP3) and diacylglycerol. The encoded protein is activated by G proteins and has been shown to be involved in the type 2 taste receptor signal transduction pathway. In addition, nuclear factor kappa B can regulate the transcription of this gene, whose protein product is also an important regulator of platelet responses.
------	--

基因ID	5330
基因名	PLCB2
Swiss	Q00722
别名	PLCB2;PLC-beta-2

产品验证



Western blot analysis of PLCB2 expressed in HEL,Rat lung using PLCB2 Rabbit pAb at 1:1000. Secondary antibody: HRP Goat Anti-Rabbit IgG (H+L) at 1:5000. Lysates/proteins: 30ug per lane. Blocking buffer: 5% non-fat dry milk in TBST. Detection: ECL Enhanced Kit. Exposure time: 120s.

实验步骤

访问官网浏览详情: www.ablybio.cn