

MAP1LC3C Rabbit pAb

货号: **AYP13252**

产品信息

反应	Human,Mouse,Rat
宿主	Rabbit
克隆性	Polyclonal
预测反应	WB: Homo sapiens
应用	WB IHC IF/ICC
推荐浓度	WB: 1:500 - 1:2000 IHC: 1:50 - 1:100 IF/ICC: 1:50 - 1:100
理论分子量	16kDa
实测分子量	17kDa
形式	Liquid
保存条件	Store at -20°C. Avoid freeze / thaw cycles. Buffer: PBS with 0.01% thiomersal,50% glycerol,pH7.3.
偶联物	Unconjugated
阳性对照	NCI-H460,OVCAR3,HepG2,293T,Rat lung
细胞定位	Cytoplasm,Cytoplasmic vesicle,Endomembrane system,Lipid-anchor,autophagosome,autophagosome membrane,cytoskeleton
纯化	Affinity purification

抗原信息

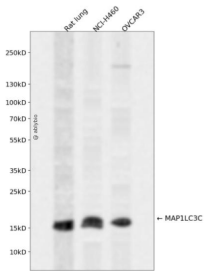
抗原信息	Recombinant fusion protein containing a sequence corresponding to amino acids 1-147 of human MAP1LC3C (NP_001004343.1).
序列	MPPPPQKIPSVRPFKQRKSLAIRQEEVAGIRAKFPNKIPVVVERYPRETFLPPLDKTKFLVPQELTMTQFLSIIRSRMVLRATEAFYLLVNNKSLVSMASATMAEIYRDYKDEDGFFVYMTYASQETFGCLESAAPRDGSSLEDRPCNPL

靶点信息

研究背景	Autophagy is a highly regulated bulk degradation process that plays an important role in cellular maintenance and development. MAP1LC3C is an ortholog of the yeast autophagosome protein Atg8 (He et al., 2003 [PubMed 12740394]).[supplied by OMIM, Nov 2010]
------	---

基因ID	440738
基因名	MAP1LC3C
Swiss	Q9BXW4
别名	MAP1LC3C;ATG8J;LC3C

产品验证



Western blot analysis of MAP1LC3C expressed in Rat lung, NCI-H460, OVCAR3 using MAP1LC3C Rabbit pAb at 1:1000. Secondary antibody: HRP Goat Anti-Rabbit IgG (H+L) at 1:5000. Lysates/proteins: 30u g per lane. Blocking buffer: 5% non-fat dry milk in TBST. Detection: ECL Enhanced Kit. Exposure time: 120s.

实验步骤

访问官网浏览详情: www.ablybio.cn