

# CR2/CD21 Rabbit pAb

货号: AYP13238

## 产品信息

反应	Human,Mouse,Rat
宿主	Rabbit
克隆性	Polyclonal
预测反应	<b>WB:</b> Mus musculus <b>IF:</b> Mus musculus
应用	WB IHC IF/ICC
推荐浓度	<b>WB:</b> 1:500 - 1:1000 <b>IHC:</b> 1:50 - 1:100 <b>IF/ICC:</b> 1:50 - 1:100
理论分子量	110kDa/112kDa/118kDa/119kDa
实测分子量	150KDa
形式	Liquid
保存条件	Store at -20°C. Avoid freeze / thaw cycles. Buffer: PBS with 0.02% sodium azide,50% glycerol,pH7.3.
偶联物	Unconjugated
阳性对照	Raji,Daudi,K-562
细胞定位	Membrane,Single-pass type I membrane protein
纯化	Affinity purification

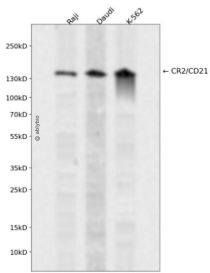
## 抗原信息

抗原信息	Recombinant fusion protein containing a sequence corresponding to amino acids 300-590 of human CR2/CD21 (NP_001006659.1).
序列	IVTYTCDPDPEEGVNFILIGESTLRCTVDSQKTGTWSGPAPRCELSTSAVQC PHPQILRGRM VSGQKDRYTYNDTVIFACM FGFTLK GSKQIRCNAQGTWEPSAPVCEKECQAPPNINLGQKEDRHMVRFDPGTSIKYSCNPGYVLVGEESIQTSEGVWT PPVPQCKVAACEATGRQLLTKPQHQFVRPDVNSSCGEGYKLSGSVYQECQGTIPWFMEIRLCKEITCPPPVYINGAHTGS SLEDFPYGTTVYTCNPGPERGVEFSLIGESTIRCTSNDQERGTWSGPA

## 靶点信息

研究背景	This gene encodes a membrane protein, which functions as a receptor for Epstein-Barr virus (EBV) binding on B and T lymphocytes. Genetic variations in this gene are associated with susceptibility to systemic lupus erythematosus type 9 (SLEB9). Alternatively spliced transcript variants encoding different isoforms have been found for this gene.
基因ID	1380
基因名	CR2
Swiss	P20023
别名	CR2;C3DR;CD21;CR;CVID7;SLEB9

## 产品验证



Western blot analysis of CR2/CD21 expressed in Raji, Daudi, K-562 using CR2/CD21 Rabbit pAb at 1:1000. Secondary antibody: HRP Goat Anti-Rabbit IgG (H+L) at 1:5000. Lysates/proteins: 30ug per lane. Blocking buffer: 5% non-fat dry milk in TBST. Detection: ECL Enhanced Kit. Exposure time: 120s.

## 实验步骤

访问官网浏览详情: [www.ablybio.cn](http://www.ablybio.cn)