

MYL1 Rabbit pAb

货号: **AYP13234**

产品信息

反应	Human,Mouse,Rat
宿主	Rabbit
克隆性	Polyclonal
预测反应	PCR: Mus musculus
应用	WB
推荐浓度	WB: 1:500 - 1:2000
理论分子量	16kDa/21kDa
实测分子量	27kDa
形式	Liquid
保存条件	Store at -20°C. Avoid freeze / thaw cycles. Buffer: PBS with 0.02% sodium azide,50% glycerol,pH7.3.
偶联物	Unconjugated
阳性对照	HL-60,Mouse heart,Rat heart
细胞定位	contractile fiber,cytosol,myofibril,sarcomere
纯化	Affinity purification

抗原信息

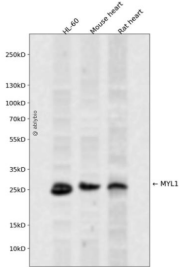
抗原信息	Recombinant fusion protein containing a sequence corresponding to amino acids 1-150 of human MYL1 (NP_524146.1).
序列	MSFSADQIAEFKEAFLFDRTGDSKITLSQVGDVLRALGTNPTNAEVRKVLGNPSNEELNAKKIEFEQFLPMMQAISNNKDQATYEDFVEGLRVFDKEGNGTVMGAELRHVLATLGEKMKEEEVEALMAGQEDSNGCINYEAFVKHIMSI

靶点信息

研究背景	Myosin is a hexameric ATPase cellular motor protein. It is composed of two heavy chains, two nonphosphorylatable alkali light chains, and two phosphorylatable regulatory light chains. This gene encodes a myosin in alkali light chain expressed in fast skeletal muscle. Two transcript variants have been identified for this gene.
基因ID	4632

基因名	MYL1
Swiss	P05976
别名	MYL1;MLC1F;MLC3F

产品验证



Western blot analysis of MYL1 expressed in HL-60, Mouse heart, Rat heart using MYL1 Rabbit pAb at 1:1000. Secondary antibody: HRP Goat Anti-Rabbit IgG (H+L) at 1:5000. Lysates/proteins: 30ug per lane. Blocking buffer: 5% non-fat dry milk in TBST. Detection: ECL Enhanced Kit. Exposure time: 120s.

实验步骤

访问官网浏览详情: www.ablybio.cn